


## USB Storage Mode Operating Guide

You can use your S750i as a media storage device by connecting to a PC via USB cable (included) and inserting an SD Card. (Windows ME, 2000, XP only). Download and install the USB driver software available at <http://www.sanyo-mobile.com/service/downloads.html>

### **Before using the USB Storage Mode**

1. Make sure your S750i is fully charged.

If the battery is low when indicated by  icon, recharge it before proceeding with the following instructions.

2. Insert your SD Card into your S750i and access the inserted SD Card.

**[Menu] → Media Album → [SD Card]**

If you cannot access data on the SD Card or there is a problem in displaying any data or folders, format the SD Card on your S750i before proceeding with USB Storage Mode operations.

Be aware that once you format the SD Card, all previously saved data is lost.

To format the SD Card:

**[Menu] → Settings → Memory Settings → Memory Card → Format Memory Card**

### **Connecting the S750i and your PC using the USB Storage Mode**

There are two ways of connecting the S750i with your PC.

- **Connection Method A**

1. From the Standby display, connect the USB cable to the S750i and your PC and press OK.



2. Select **USB Storage Mode** and press OK.



Other available modes from this display are:

**Data Transfer Mode:** For using the S750i as a modem.

**Synchronise:** For PIM data Synchronisation.

**Print Mode:** For printing via PictBridge.

3. Press [Yes] after you see the following message.



4. After the following message appears, it is possible to access the removable storage disk on your S750i from the PC.



- **Connection Method B**

1. From the Standby display, go to

**[Menu] → Settings → Connectivity → USB Storage Mode**

2. Select **Execute** and press OK.

3. Connect the USB cable to your S750i and PC after the message "Please connect USB" appears on your S750i.

**Note:** After the following message appears, your S750i turns into a removable storage disk which is accessible from your PC.



## Access the SD Card using the USB storage mode

1. From your PC, confirm your S750i has been recognised as a removable storage disk after performing Connection Method A or B indicated above. Refer to your PC's operating manual on how to confirm a USB connected device is actually connected.

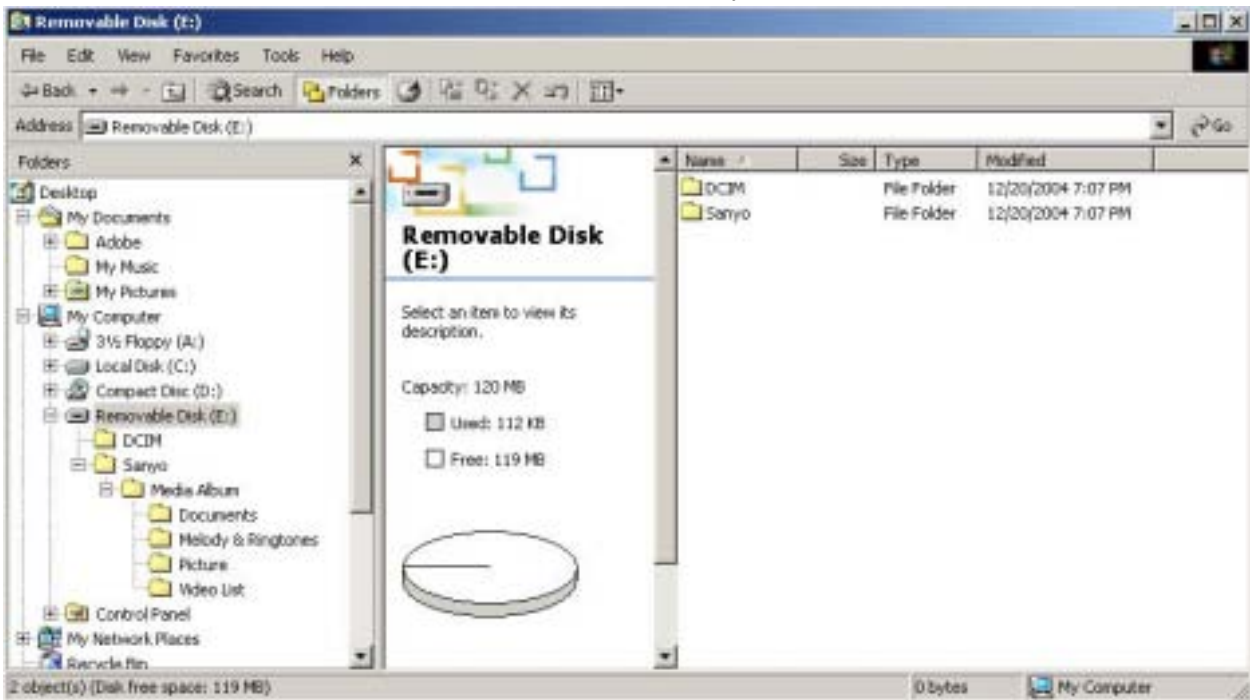
2. Referring to table 2-1 below, copy or move files from your PC to folders on the SD Card.

**Note:** You will need to put the files into the correct corresponding folders (\Sanyo\Media Album\...) as indicated in the following table in order to play them.

**Table 2-1**

<i>S750i Media Album</i>	<i>Media format (Extension)</i>	<i>SD Card storage folder</i>
<b>Digital Camera Folder</b>	JPEG (.jpg)	DCIM
<b>Picture</b>	JPEG (.jpg, .jpeg, .jpe) PNG (.png) GIF (.gif) Bitmap (.bmp) Wireless bitmap (.wbmp)	\Sanyo\Media Album\Picture
<b>Video List</b>	H.263 (.3gp, .mp4) Mpeg4 (.3gp, .mp4)	\Sanyo\Media Album\Video List
<b>Melody &amp; Ringtones</b>	MP3 (.mp3) AAC (.3gp, .mp4) MIDI (.mid, .midi) Voice (.amr)	\Sanyo\Media Album\Melody & Ringtones
<b>Documents</b>	SVG (.svg, .svgz) vCard (.vcf) vCalendar (.vcs) vNote (.vnt) Text (.txt)	\Sanyo\Media Album\Documents

## Folder view of an SD Card inserted on the S750i from your PC



### Disconnecting a USB cable from your S750i

Before disconnecting the Removable disk, make sure you select the device from your PC's task tray and safely release the connection before pulling the USB cable out.

1. Remove the USB cable from the S750i and your PC after the message "Disconnecting... Please remove USB." is displayed on your S750i.