


USB Storage Mode Operating Guide

You can use your S750 as a media storage device by connecting to a PC via USB cable and inserting an SD Card. (Windows ME, 2000, XP only). Download and install the “USB driver for Sanyo S750” software available at <http://www.sanyo-mobile.com/service/downloads.html>

USB cable is not included in the standard box. The USB cable is a separately sold accessory.

Before using the USB Storage Mode

1. Make sure your S750 is fully charged.

If the battery is low when indicated by  icon, recharge it before proceeding with the following instructions.

2. Insert your SD Card into your S750 and access the inserted SD Card.

Menu → Media Album → (Press) SD Card

If you cannot access data on the SD Card or there is a problem in displaying any data or folders, format the SD Card on your S750 before proceeding with USB Storage Mode operations. Be aware that once you format the SD Card, all previously saved data is lost.

To format the SD Card:

Menu → Settings → Memory Settings → Memory Card → Format Memory Card

Connecting the S750 and your PC using the USB Storage Mode

There are two ways of connecting the S750 with your PC.

• Connection Method A

1. From the **Standby display**, connect the USB cable to the S750 and your PC and press OK.



2. Select “USB Storage Mode” and Press OK.



Other available modes from this display are:

Data Transfer Mode: For using the S750 as a modem.

Synchronise: For PIM data Synchronisation.

Print Mode: For printing via PictBridge.

3. Press “Yes” after you see the following message.



4. After the following message appears, it is possible to access the removable storage disk on your S750 from the PC.



- **Connection Method B**

1. From the **Standby display**, go to

Menu → Settings → Connectivity → USB Storage Mode

2. Select **Execute** and press OK.

3. Connect the USB cable to your S750 and PC after the message “Please connect USB” appears on your S750.

Note: After the following message appears, your S750 turns into a removable storage disk which is accessible from your PC.



Access the SD Card using the USB storage mode

1. From your PC, confirm your S750 has been recognised as a removable storage disk after performing Connection Method A or B indicated above. Refer to your PC's operating manual on how to confirm a USB connected device is actually connected.

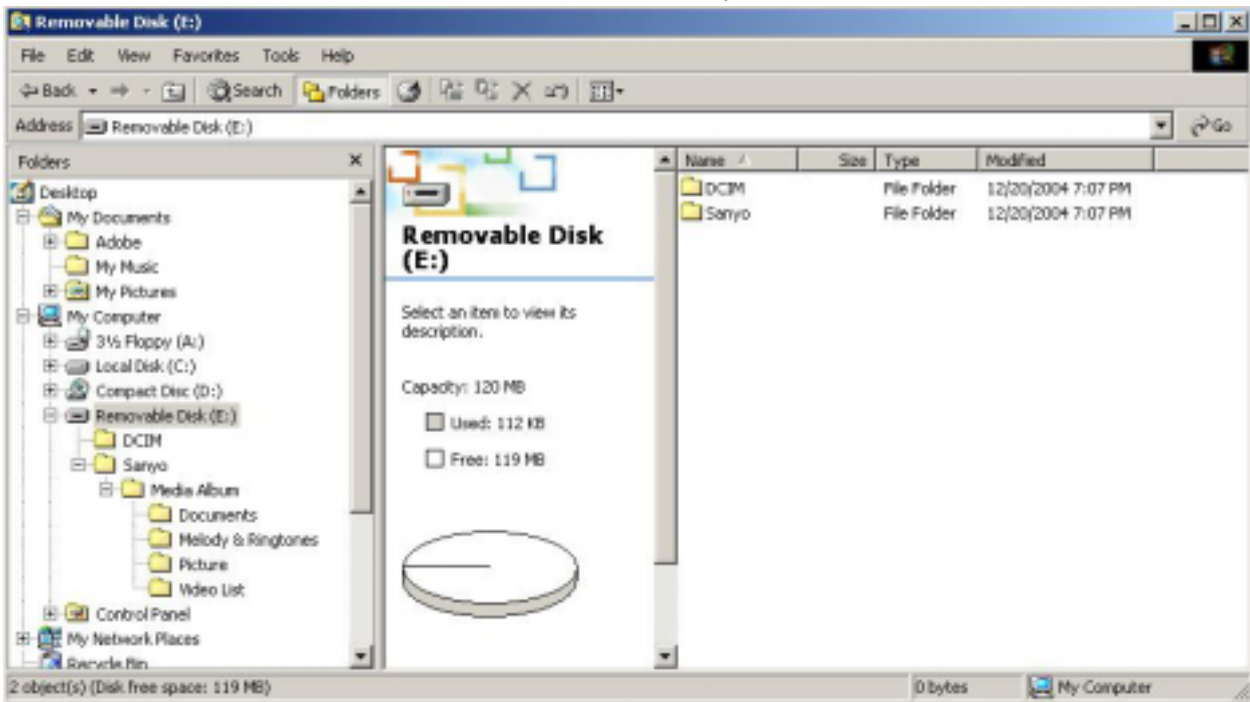
2. Referring to table 4-1 below, copy or move files from your PC to folders on the SD Card.

Note: You will need to put the files into the correct corresponding folders (\Sanyo\Media Album\...) as indicated in the following table in order to play them.

Table 4-1

S750 Media Album	Media format (Extension)	SD Card storage folder
Digital Camera Folder	JPEG (.jpg)	DCIM
Picture	JPEG (.jpg, .jpeg, .jpe) PNG (.png) GIF (.gif) Bitmap (.bmp) Wireless bitmap (.wbmp)	\Sanyo\Media Album\Picture
Video List	H.263 (.3gp, .mp4) Mpeg4 (.3gp, .mp4)	\Sanyo\Media Album\Video List
Melody & Ringtones	MP3 (.mp3) AAC (.3gp, .mp4) MIDI (.mid, .midi) Voice (.amr)	\Sanyo\Media Album\Melody & Ringtones
Documents	SVG (.svg, .svgz) vCard (.vcf) vCalendar (.vcs) vNote (.vnt) Text (.txt)	\Sanyo\Media Album\Documents

Folder view of an SD Card inserted on the S750 from your PC



Disconnecting a USB cable from your S750

Before disconnecting the Removable disk, make sure you select the device from your PC's task tray and safely release the connection before pulling the USB cable out.

1. Remove the USB cable from the S750 and your PC after the message "Disconnecting... Please remove USB." is displayed on your S750.