

## Synchronisation Setup Guide

You can synchronise your MS-Outlook Address book, Schedule or ToDo information on your S750/S750i with another device (such as your PC). Download the synchronisation software ‘Intellisync for Sanyo Mobile Phones’ available at <http://www.sanyo-mobile.com/service/downloads.html>, and then install the software. Once the software is installed, please proceed with the instructions below. When using the USB to synchronise, from the same web site location or S750/S750i Installation CD-ROM, download and install the Sanyo S750/S750i USB driver as well as download and read the USB driver setup guide before you start.

**System requirements** : Windows OS: 98SE, ME, 2000, XP

MS-Outlook application: Outlook 2000, 2002, 2003

**Note** : You cannot synchronise non-MS-Outlook application data.

### Preparing your S750/S750i for synchronisation for the first time

1. From your S750/S750i standby menu, go to  
**[Menu] → Settings → Connectivity → Synchronise → Local**
2. Select **<No items>** (Profile name) and press OK to create a profile.



**Note** : At a later date you may wish to create another “Profile” to synchronise with another PC or device, so choose a profile name which clearly identifies the device in each case.  
e.g. Work PC, Home PC, or a co-worker’s mobile etc.

3. Enter the appropriate information for each of the following fields. (Press OK to enter the field or exit once finished). In the following examples, we used the profile name “My Profile”.



**Profile:** Input your desired profile name.

**User Name:** Input your desired user name.

**Password:** Input your desired password.

**Important** : Before entering the password, you need to enter the security ‘code’, which is set to ‘9999’ as default, in order to enable access to the password settings. You may also change the security code by accessing  
**[Menu] → Settings → Security → Change Code → Yes**

You may use both the user name and password to authenticate your synchronisation client.



**Communication Method:** Select a communication method from either **Infrared, Bluetooth, or USB** and make sure the other device you are connecting with supports this function as well.

**Method:** Select a data synchronisation method from either normal or replace.

Normal: Exchanges data between the S750/S750i and the other device.

Replace: Replaces the other device's data with the S750/S750i's.



**Selected Data:** Select the data you want to synchronise using the navigation pad keys and press OK. (Address Book, Schedule, and ToDo).

The following database names can be left as is, and do not normally require modification.

**Database (Address Book):** Inputs the database name for the Address Book.

**Database (Schedule):** Inputs the database name for the Schedule.

**Database (ToDo):** Inputs the database name for the ToDo list.

The default values are './PhoneBook', './Sch', and './ToDo' respectively.

## Preparing the other device (eg. PC) for synchronisation

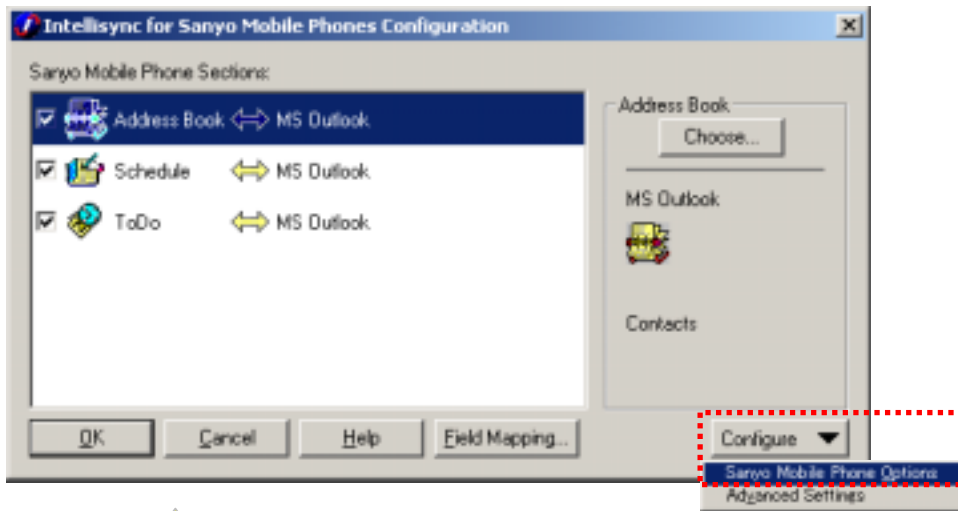
If you are using a USB cable to synchronise, refer to S750/S750i USB driver setup guide before proceeding.

1. Open the Intellisync software configuration window by double clicking the 'Intellisync for Sanyo' icon (📶 or 📶) in your task bar.
2. Click to indicate the items you want to synchronise, otherwise, click to remove the tick mark from the item you do not want to synchronise. These tick box settings must match the 'Selected Data' settings you made in the 'Preparing your S750/S750i for synchronisation for the first time' section above.

**Note :** For your protection, data can't be exchanged between the S750/S750i and another device unless the settings selected for exchange are the same on both devices.

3. Click 'Configure', then choose 'Sanyo Mobile Phone Options'.

**Note :** This configuration window must be closed during synchronisation.

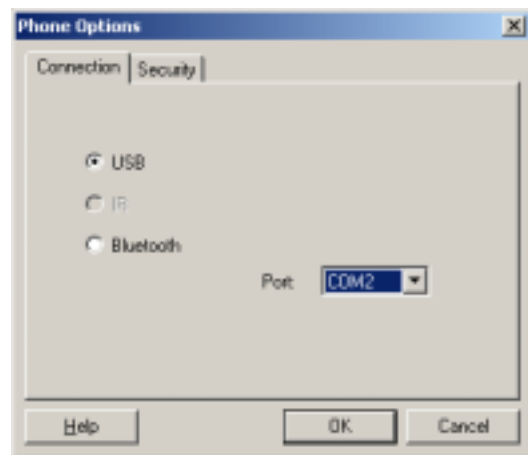


Settings must be the same.



4. Select a communication method from either **Infrared, Bluetooth, or USB**.
5. If you are using a USB, Bluetooth, or Infrared adapter, make the connection, and select an available Port. (**Note : If you fail to synchronise, try selecting another port, it is sometimes necessary to try each port one at a time until the correct port is identified**)

Click 'OK' to close the window.

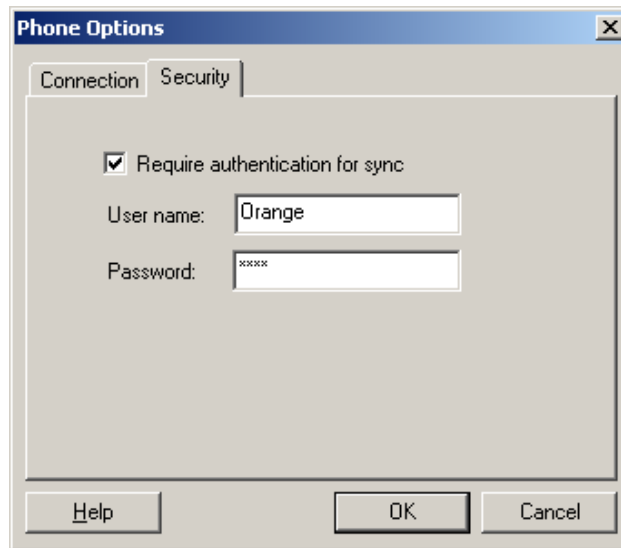


**Note :** Infrared (IR) does not require a port.

6. Click 'OK' again to close the configuration window.

**Note :** Remember to close the configuration window during synchronisation.

**Note :** To protect your synchronisation data from unintended users when transferring, you can place a check mark in the '**Require authentication for sync**' field in Intellisync's Phone Options display Security tab (situated next to the previous 'Connection' tab), and enter the user name and password which you entered in your S750/S750i to activate the authentication. Refer to the 'Advanced settings' for further settings, and to the 'Help' files for further information.



## Starting Synchronisation

Before starting, make sure you have completed all connectivity settings on the other device you are connecting with (e.g. setting up the USB driver and connecting the USB cable, or IR adaptor, or Bluetooth adaptor), and that the settings between S750/S750i and the other device are consistent.

**Note :** Make sure you have closed all the 'Intellisync for Sanyo' windows before initiating synchronisation

When using the USB cable for synchronisation, from your S750/S750i standby menu, go to:

**[Menu] → Settings → Connectivity → Synchronise → Local → Select a profile → [Start] → [Yes]**

When a confirmation window appears on the other device (such as your PC), confirm to proceed with synchronisation by pressing OK or Yes for example. (This confirmation window can be disabled in the 'Advanced settings'). If using Bluetooth to synchronise, select press [Search] and select the Bluetooth device you want to pair with and enter the device password when prompted. Make sure the same password is entered on the device you are connecting with.

**Note :** The initial synchronisation may take a couple of minutes. If synchronisation is interrupted or stopped while in operation data may not synchronise or be properly synchronised. Make sure you try to avoid any situations which may cause interruption or stop of this function such as low charged battery and so on.

## Troubleshooting

Read through this guide again to confirm you did not misunderstand any instructions or skip any steps.

The following is a general list of error messages you may encounter on your S750/S750i.

<i>Error message</i>	<i>Interface</i>			<i>Solution</i>
	<b>IrDA</b>	<b>Bluetooth</b>	<b>USB</b>	
Please go to Phone Settings to set time and date	✓	✓	✓	Set up the time and date from your Phone Settings.
User Name unregistered. Please register.	✓	✓	✓	Register the User Name.
Password unregistered. Please register.	✓	✓	✓	Register the Password.
No data selected	✓	✓	✓	Select the data. The data which you want to synchronise must be selected.
Please connect USB			✓	Make sure the USB cable is properly connected.
Timed out	✓			If you are using IR, make sure that the IR ports are facing one another and within a range of 20 cm. Re-trying the operation may resolve the problem.
Could not login	✓	✓	✓	Make sure that the User Name and Password being used are identical between the S750/S750i and Intellisync.
Failed to Synchronise		✓	✓	Try re-selecting other COM ports. (Confirm the assigned com port for your S750/S750i when connected via USB by checking the 'STEL OBEX Port' entry in the device manager.)
			✓	Make sure the USB driver has been installed.
	✓	✓	✓	Make sure the Communication method is consistent between your S750/S750i and Intellisync's program settings.