

## Bluetooth™ Setup Guide

1. Accessing Bluetooth functions.....	P2
2. Send data via Bluetooth.....	P3
3. Using your phone as a Bluetooth modem.....	P5
4. Troubleshooting dial-up problems.....	P6
5. Bluetooth synchronisation.....	P7

### Before getting started

- Make sure your PC is Bluetooth compatible if you will be synchronising data with your PC. The explanations in this guide are examples, and may be different depending on the Bluetooth device you are using.
- When you use S750/S750i as a modem via Bluetooth, check whether your PC is Bluetooth compatible and supports dial-up via Bluetooth.
- Download and read the Modem Setup Guide available at:  
<http://www.sanyo-mobile.com/service/downloads.html>
- Download and read the Synchronisation Setup Guide available at:  
<http://www.sanyo-mobile.com/service/downloads.html>

## 1. Accessing Bluetooth functions

From your S750/S750i Standby display, go to

[Menu] → Settings → Connectivity → Bluetooth



**Note :** You can also access the Bluetooth menus using the following shortcut.

From the Standby display, press OK → **Bluetooth**

Menu item	Explanation
Switch Bluetooth ON/OFF	To switch Bluetooth mode on or off.
Connect to Hands-free	To use with a Bluetooth enabled headset.
Exchange Owner Info	To exchange Owner Information.
Bluetooth Settings	To check or perform various Bluetooth settings.

## 2. Send data via Bluetooth

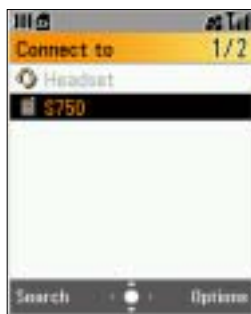
Using Bluetooth you can send data such as audio, video, photos, and documents, as well as vObjects such as vCards to another Bluetooth compatible device.

To send audio, photo, video, or a document from the S750/S750i

1. From the sender's phone  
    **[Menu] → Media Album → Picture, Video List, Melody & Ringtones, or Documents →**  
    Select a data item → **[Options] → Send → Send via Bluetooth → Send → [Yes]**
2. From the receiver's device, activate Bluetooth reception mode. (eg. if the receiver's phone is an S750/S750i, press and hold OK from the Standby display to switch Bluetooth mode on.)
3. The sender needs to press [Search] if the receiver's device is not indicated in the Connection List.



4. Select a device from the displayed list and press OK.



**Note :** Press [Yes] if you want to register the receiver's device in the Connection List. Press [No] if you do not want to save the device to your connection list. Adding the device to the connection list will allow you to connect easier the next time you want to connect.

5. Enter the Bluetooth Password (passkey) on the sender's phone (receiver must also input the same password) and the data is transmitted once the receiver selects to save the incoming data on their device.

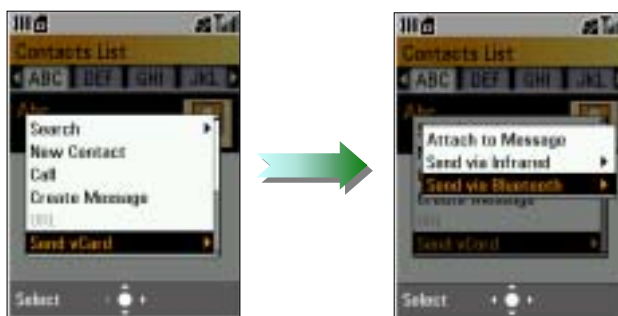


**Note :** Bluetooth Password (Also referred to as 'Passkey' or 'PIN'.) is used for authorizing a connection between 2 Bluetooth devices. Please enter the same number (up to 8 digits) for each device. The S750/S750i waits for approximately half a minute for the return password from the device you are connecting with. The device you are connecting with has its own timeout period which may be shorter than the S750/S750i's, therefore you will need to enter the password before it times out.

**Note :** If you don't want to be bothered with entering a Bluetooth Password, from the Bluetooth Settings display, switch the **Bluetooth Password** setting to **OFF** on both devices. If you have already registered a device to your Connection List and reconnect to it later on, you will not be prompted to enter a Bluetooth Password.

To send a vObject (vCard, vNote, vToDo or vCalendar) from the S750/S750i


1. Example sending a vCard from the Contacts list on your phone (sender's phone).  
**[Menu] → Address Book → Contacts List → Select an entry → [Options] → Send vCard → Send via Bluetooth → Send → [Yes]**




2. Refer to step 2 on the previous page and follow the procedures to connect and transfer the data.

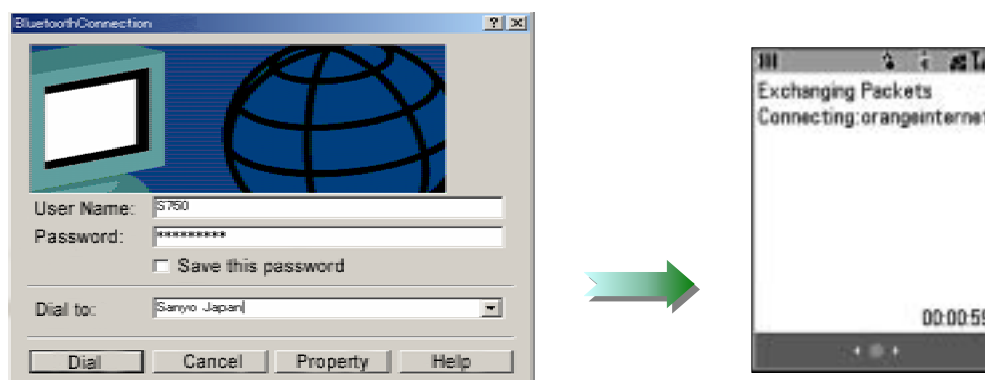
### 3. Using your phone as a Bluetooth modem

Your PC must be Bluetooth compatible and support dial-up via Bluetooth. Before using this function, make sure to first set up and activate Bluetooth on your PC, as well as pair and connect your PC with your S750/S750i before proceeding (see note on pairing below). Refer to the Modem Setup Guide available at <http://www.sanyo-mobile.com/service/downloads.html> for details on how to configure your S750/S750i's modem and also refer to your PC's operating instructions on how to activate Bluetooth as well as pair and connect with the S750/S750i.

1. From your S750/S750i Standby display, press and hold OK to switch Bluetooth mode on.
2. Confirm the  icon has appeared in the top of the S750/S750i's display.
3. Initiate the dial-up connection from your PC via the S750/S750i modem.

If the connection between the S750/S750i and the PC is completed correctly, the  icon will appear in the top of the S750/S750i's display.

4. Connect to the mobile network via your PC after entering the information required for dial-up.  
(Refer to the Modem Setup Guide)



**Note :** When pairing your PC with your phone,

You may be prompted to enter the Bluetooth Password (Also referred to as 'Passkey' or 'PIN'.) which is used for authorizing a connection between 2 Bluetooth devices. Enter the same number (up to 8 digits) for each device. If you have already registered a device to your connection list and reconnect to it later on, you will not be prompted to enter the Bluetooth Password. The S750/S750i waits for approximately half a minute for the return password from the device you are connecting with. The device you are connecting with has its own timeout period which may be shorter than the S750/S750i's, therefore you will need to enter the password before it times out.

## 4. Troubleshooting dial-up problems

If you cannot connect to the mobile network via Bluetooth, check the Bluetooth status icon on the S750/S750i.

### **Status 1**

Even after the connection between your S750/S750i and the PC has been established, there is a possibility that signal may be lost due to problems on the mobile network or with the modem setup. Confirm you are in an area covered by the mobile network and the modem has been set up properly according to this guide and the Modem Setup Guide.

### **Status 2**

The problem may be the connection between your Bluetooth device and the S750/S750i. Repeat steps 1, 2, and 3 in section “3. Using your phone as a Bluetooth modem” of this guide and confirm Bluetooth is activated on your PC.

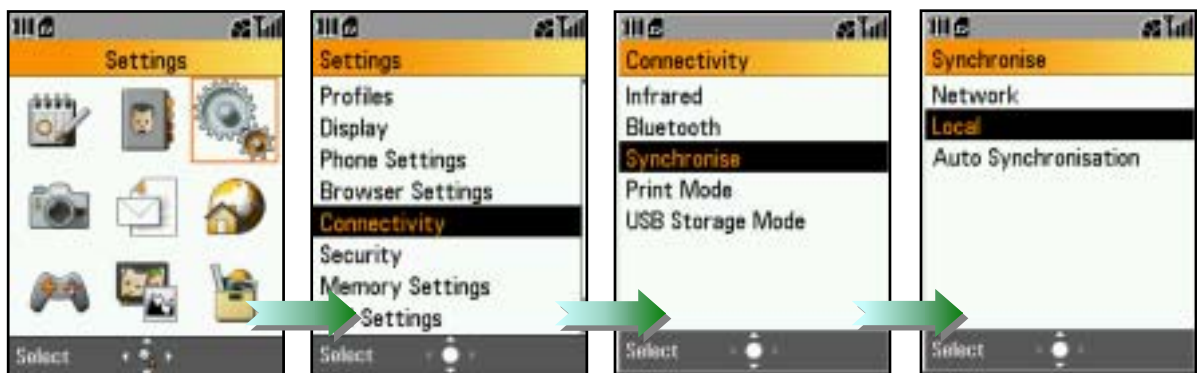
If you cannot resolve the problems on your own contact an Orange service representative by dialing the customer service number indicated at <http://www.orange.co.uk>.

## 5. Bluetooth synchronisation (with your PC using your S750/S750i for the first time)

You need to download and install the “Intellisync for Sanyo Mobile Phones” software available at <http://www.sanyo-mobile.com/service/downloads.html> before proceeding.

Make sure your PC is Bluetooth enabled and all settings on your PC have been configured in preparation to connect with the S750/S750i. Refer to your PC’s user guide for details on Bluetooth settings.

1. Go to your PC and open the “Intellisync for Sanyo” software.
2. Confirm the items ticked for synchronisation and perform the required settings (refer to the Synchronisation Setup Guide), then press OK.
3. From your phone’s Standby display, go to  
**[Menu] → Settings → Connectivity → Synchronise → Local**




4. Select <No items>



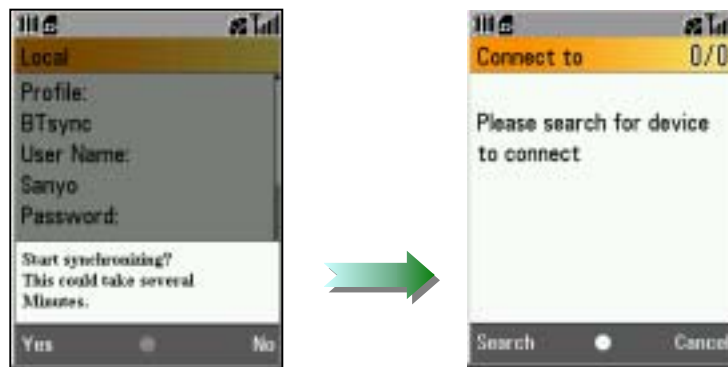
5. After the Local entry display appears, enter and create your synchronisation profile according to information indicated in table 5-1 below.




**Table 5-1**

<i>Item</i>	<i>Action</i>	<i>Comments</i>
<b>Profile</b>	Enter the profile name.	User's choice.
<b>User Name</b>	Enter user name.	User's choice. * If you have entered a "User Name" in the security setting in your "Intellisync for Sanyo" software, enter the same name here.
<b>Password</b>	Enter your password * The code to change your password is <b>9999</b> by default.	User's choice. * If you have entered a "Password" in the security settings in your "Intellisync for Sanyo" software, enter the same password here.
<b>Communication Method</b>	Select Bluetooth.	
<b>Method</b>	Select Method.	1) To synchronise your mobile phone and PC data, choose the "Normal" mode. 2) To overwrite any existing data on the connected PC with data from your mobile phone, choose the "Replace" mode.
<b>Selected Data</b>	Select any data.	User's choice. 
<b>Database (Address Book)</b>	./PhoneBook (default).	There is no need to modify the default settings. Only change this setting if absolutely required. (For advanced users.)
<b>Database (Schedule)</b>	./Sch (default).	
<b>Database (ToDo)</b>	./ToDo (default).	

6. Select [Start] → [Yes] → [Search]



7. Select your PC as the device to connect and press OK. Press [Yes] if you want to register the device in the connection list. Press [No] if you don't want to add the device to the connection list. Enter the Bluetooth Password (passkey) if prompted.
8. After synchronisation starts the  icon is displayed on your phone.