

## Modem Setup Guide

This manual explains how to configure your S750/S750i as a modem for use with your PC.

Configurations for the USB modem described below are the same for the Bluetooth modem.

**Note** : Depending on your operating system, some of the instructions and screens displayed on your PC may be different.

Before getting started:

Make sure you have already installed the S750/S750i driver included on the CD-ROM that came with your S750/S750i and obtained the Internet access information such as user names, passwords and so on from Orange (indicated in Table 1 for the UK and France only), your operator, or ISP (Internet Service Provider).

1. Turn on your PC and the S750/S750i.

**Note** : Enter your USIM/SIM Pin code when prompted.

2. Connect the USB cable to the S750/S750i and the USB port on your PC.

### **Confirming/Changing the setting of your phone to 3G or 2G**



at the top right of the screen indicates you are in 3G coverage.



at the top right of the screen indicates you are in 2G coverage.

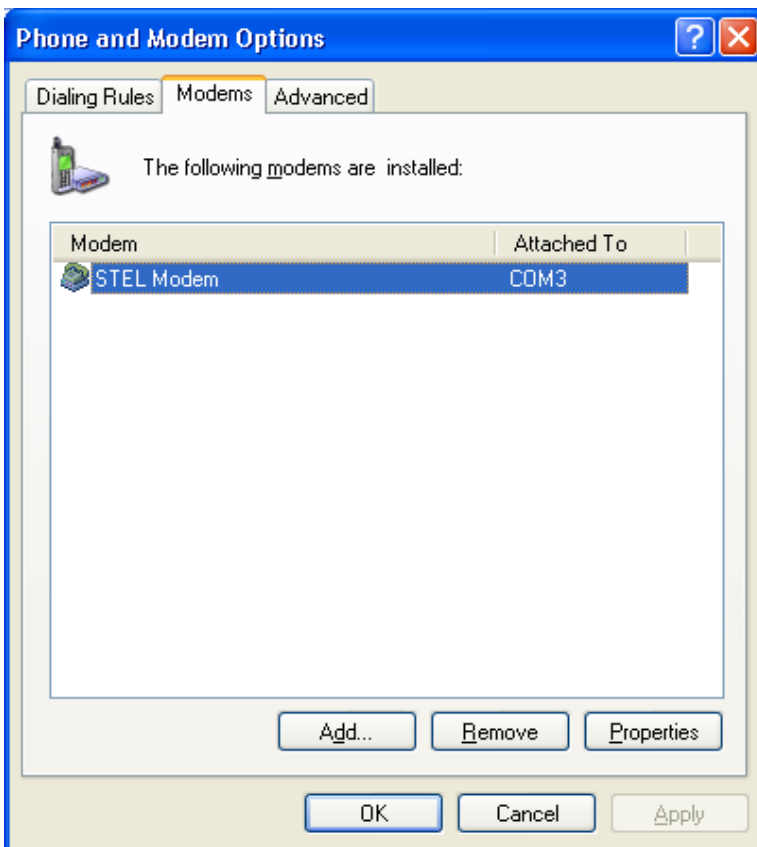
1. Press [Menu].
2. Highlight the **Settings** icon and press OK.
3. Select **Phone Settings** and press OK.
4. Select **Select Network** and press OK.
5. Select **Select Network** and press OK.
6. Press OK.
7. Select **UMTS/GSM Dual** to use the 3G (UMTS) network in the UK or France. Select **GSM Only** if you want to use the 2G (GSM/GPRS) network in France.

**Note** : The S750/S750i's modem cannot be used within the 2G(GSM) network in the UK.

## Configuring your S750/S750i to function as a modem

The following explains how to setup your S750/S750i's modem using the USB cable. To use the modem via Bluetooth, first perform the following settings, and then refer to the "Dial-up via Bluetooth" instructions in the Bluetooth Setup Guide available at <http://www.sanyo-mobile.com/service/downloads.html>

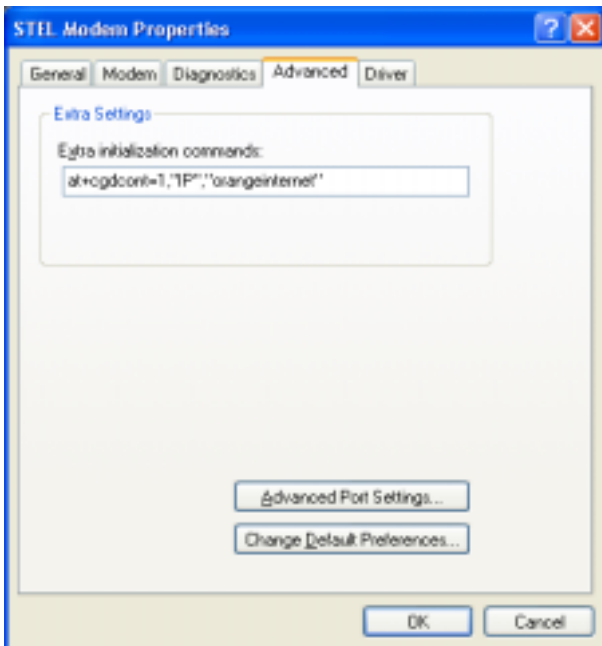
1. On your PC, click **Start** and then click **Control Panel**.
2. Double-click the **Phone and Modem Options** icon. If you are prompted to indicate your location/region etc., enter in the necessary information and click **OK**.
3. The **Phone and Modem Options** screen appears. Click the **Modems** tab and then click **STEL Modem**. Make sure that the COM port indicated in the **Attached To** list is the correct port on your PC for connecting to the S750/S750i. (To use a Bluetooth connection, please choose Bluetooth Modem.)
4. Click **Properties**.



The **STEL Modem Properties** screen appears.

5. Click the **Advanced** tab and in the **Extra initialization commands:** field, and enter the AT command code.

**Note :** AT command codes for the UK and France are shown in Table 1 at the end of this document.



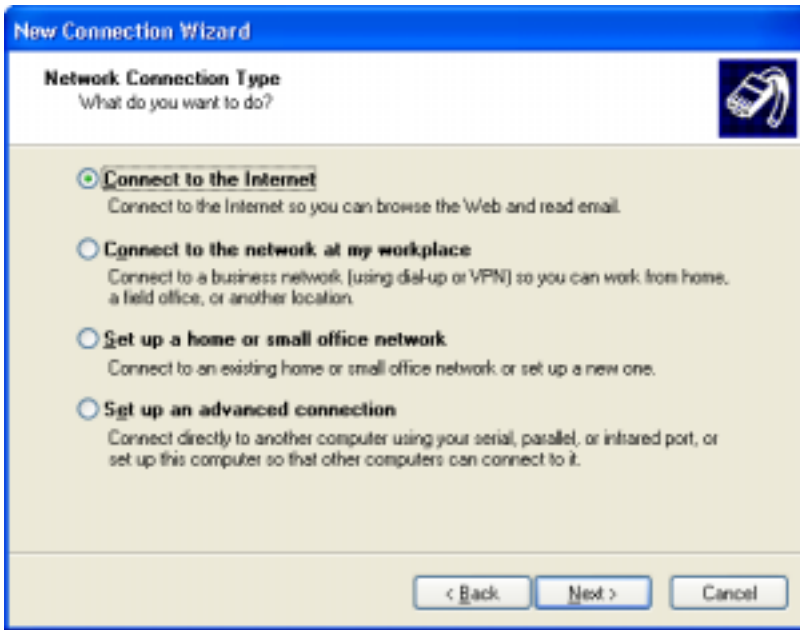
6. Click **OK** to confirm.
7. Click **OK** to close the **Phone and Modem Options** screen.

## Configuring your PC's dial-up settings

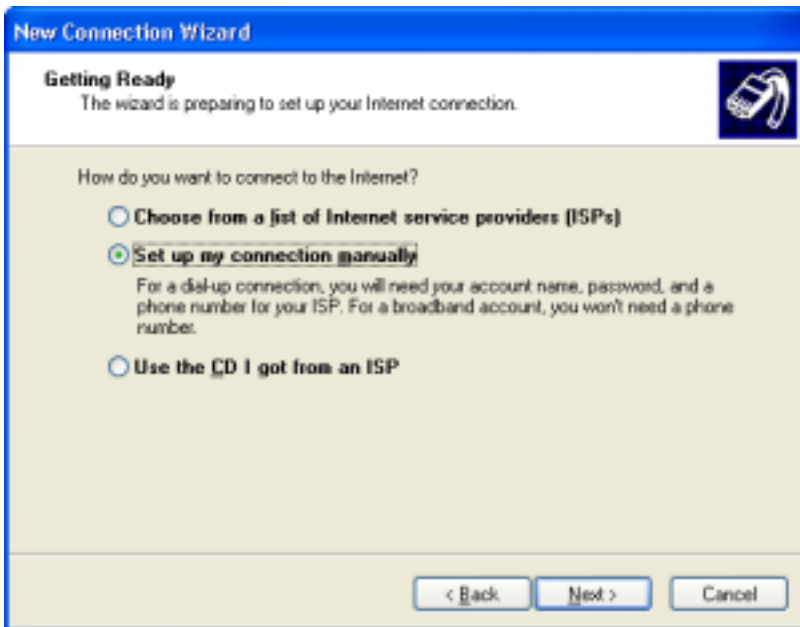
1. Open **Control Panel**, double-click the **Network Connections** icon and then click **Create a new connection**.
2. The **New Connection Wizard** screen appears. Click **Next**.



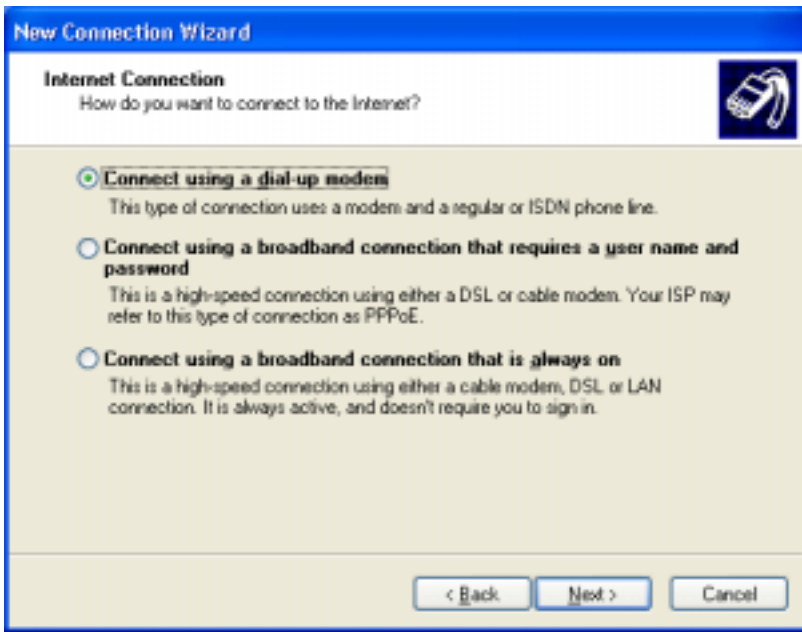
3. Click **Connect to the Internet** and then click **Next**.



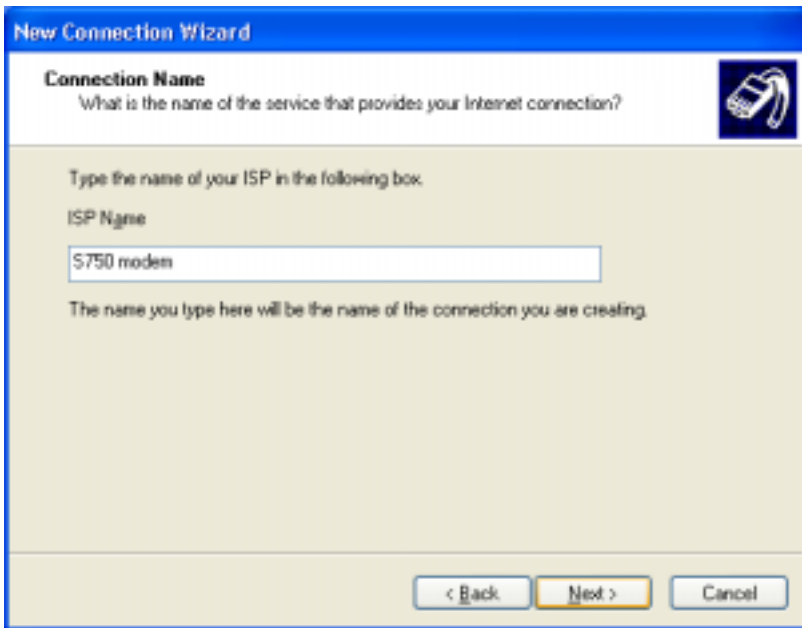
4. The screen shown below appears. Click **Set up my connection manually** and then click **Next**.



5. The screen shown below appears. Click **Connect using a dial-up modem** and then click **Next**.

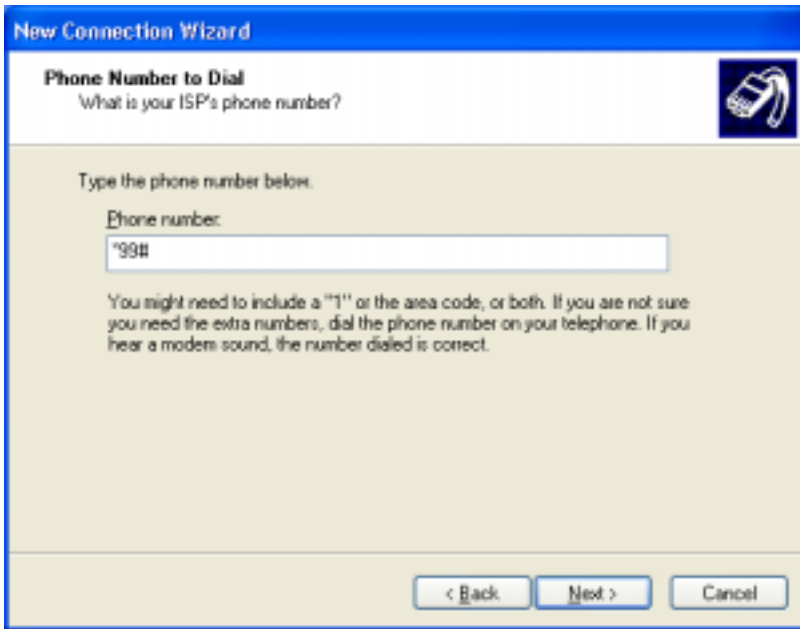


6. The screen shown below appears. In the **ISP Name** field, enter the desired connection name (anything is OK, for example, "S750 modem"), and then click **Next**.




7. The screen shown below appears. In the **Phone number:** field, enter the ISP telephone number and then click **Next**.

**Note :** The appropriate ISP telephone numbers for the UK and France are shown in Table 1 at the end of this document.



The screenshot shows a Windows dialog box titled "New Connection Wizard". The main heading is "Phone Number to Dial" with a sub-heading "What is your ISP's phone number?". There is a small icon of a telephone handset in the top right corner. The text says "Type the phone number below." followed by a label "Phone number:" and a text input field containing the text "\*99#". Below the input field, there is a paragraph of text: "You might need to include a '1' or the area code, or both. If you are not sure you need the extra numbers, dial the phone number on your telephone. If you hear a modem sound, the number dialed is correct." At the bottom of the dialog, there are three buttons: "< Back", "Next >", and "Cancel".

8. The screen shown below appears. In the **User name:** and **Password:** fields (including **Confirm password:** field), enter the appropriate information shown in Table 1, and then click **Next**.



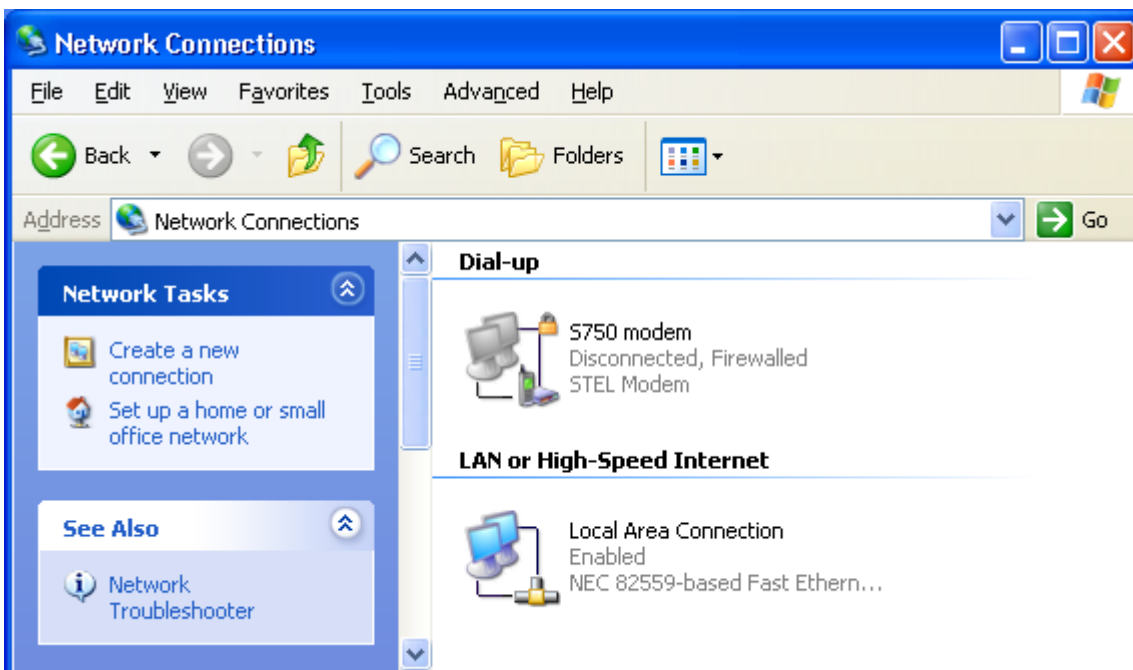
The screenshot shows a Windows dialog box titled "New Connection Wizard". The main heading is "Internet Account Information" with a sub-heading "You will need an account name and password to sign in to your Internet account." There is a small icon of a telephone handset in the top right corner. The text says "Type an ISP account name and password, then write down this information and store it in a safe place. (If you have forgotten an existing account name or password, contact your ISP.)" Below this text are three text input fields: "User name:", "Password:", and "Confirm password:". Underneath the input fields are three checked checkboxes: "Use this account name and password when anyone connects to the Internet from this computer", "Make this the default Internet connection", and "Turn on Internet Connection Firewall for this connection". At the bottom of the dialog, there are three buttons: "< Back", "Next >", and "Cancel".

9. The screen shown below appears. Click **Finish** to confirm your settings.







## Connecting to the Internet

1. Open **Control Panel**, double-click **Network Connections**, and then double-click the icon with the name you gave for the modem in step 6 of “Configuring your PC’s dial-up settings”.



2. In the **User name:** and **Password:** fields, enter the information provided by Orange (indicated in Table 1 for the UK and France only, please enter the same username and password that you have already previously entered in the setup procedure), your operator, or ISP and then click **Dial** to connect to the Internet.

**Table 1: Reference settings**

Network Name	Orange France	Orange UK	Orange France
Network Settings	UMTS (Packet)  GPRS (Packet) 	UMTS (Packet)  GPRS (Packet) 	GSM (Circuit Switching)
AT Command	at+cgdcont=1,"IP", "orange"	at+cgdcont=1,"IP", "orangeinternet"	AT+CBST=71,0,1 or AT+CBST=7,0,0
ISP Telephone Number	*99#	*99#	+33 674 501 100 (0033 674 501 100)
User Name	Orange	Blank (Do not enter any words)	Orange
Password	Orange	Blank (Do not enter any words)	Orange