

Modem Setup Guide

This manual explains how to configure your S750/S750i as a modem for use with your PC.

Configurations for the USB modem described below are the same for the Bluetooth modem.

Note : Depending on your operating system, some of the instructions and screens displayed on your PC may be different.

Before getting started:

Make sure you have already installed the S750/S750i driver included on the CD-ROM that came with your S750/S750i and obtained the Internet access information such as user names, passwords and so on from Orange (indicated in Table 1 for the UK and France only), your operator, or ISP (Internet Service Provider).

1. Turn on your PC and the S750/S750i.

Note : Enter your USIM/SIM Pin code when prompted.

2. Connect the USB cable to the S750/S750i and the USB port on your PC.

Confirming/Changing the setting of your phone to 3G or 2G



at the top right of the screen indicates you are in 3G coverage.



at the top right of the screen indicates you are in 2G coverage.

1. Press [Menu].
2. Highlight the **Settings** icon and press OK.
3. Select **Phone Settings** and press OK.
4. Select **Select Network** and press OK.
5. Select **Select Network** and press OK.
6. Press OK.
7. Select **UMTS/GSM Dual** to use the 3G (UMTS) network in the UK or France. Select **GSM Only** if you want to use the 2G (GSM/GPRS) network in France.

Note : The S750/S750i's modem cannot be used within the 2G(GSM) network in the UK.

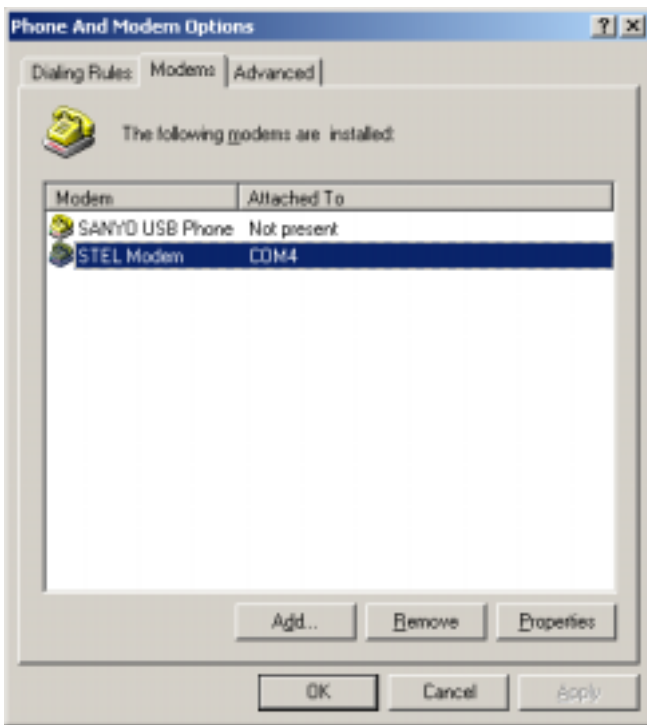
Configuring your S750/S750i to function as a modem

The following explains how to setup your S750/S750i's modem using the USB cable.

To use the modem via Bluetooth, first perform the following settings, and then refer to the “Dial-up via Bluetooth” instructions in the Bluetooth Setup Guide available at

<http://www.sanyo-mobile.com/service/downloads.html>

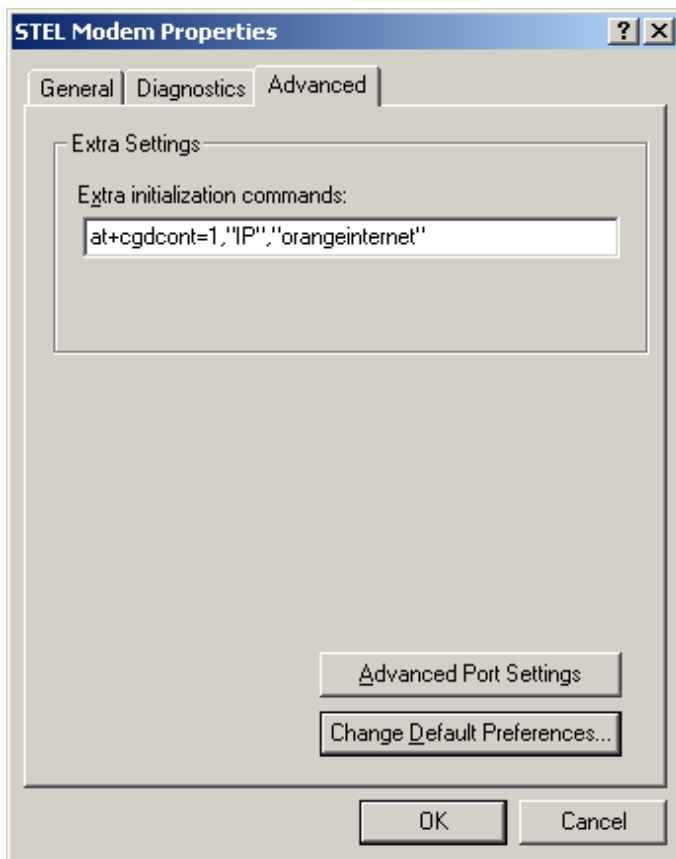
1. On your PC, click **Start**, point to **Settings**, and then click **Control Panel**.
2. Double-click the **Phone and Modem Options** icon. If you are prompted to indicate your location/region and so on, enter in the necessary information and click **OK**.
3. The **Phone and Modem Options** screen appears. Click the **Modems** tab and then click **STEL Modem**. Make sure that the COM port indicated in the **Attached To** list is the correct port on your PC for connecting to the S750/S750i. (To use a Bluetooth connection, please choose Bluetooth Modem.)
4. Click **Properties**.



The **STEL Modem Properties** screen appears.

5. Click the **Advanced** tab and in the **Extra initialization commands:** field, and enter the AT command code.

Note : AT command codes for the UK and France are shown in Table 1 at the end of this document.



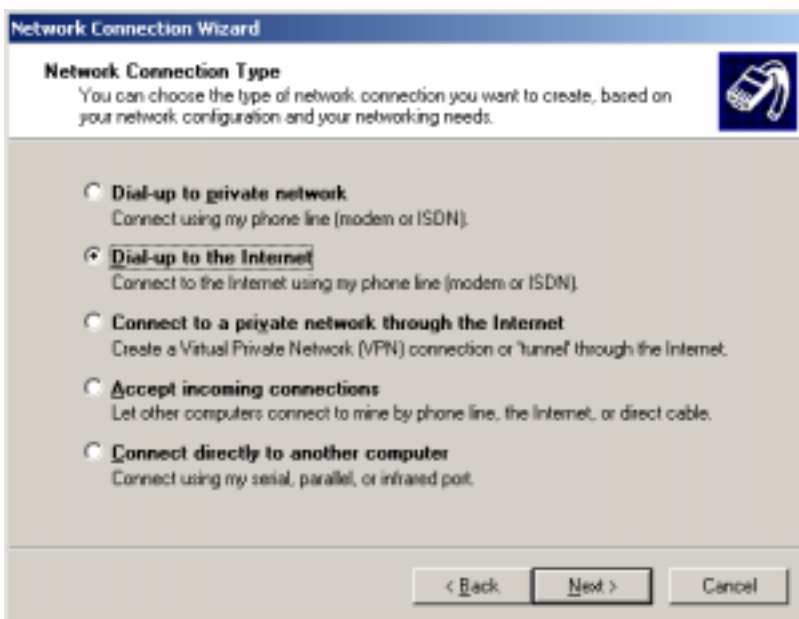
6. Click **OK** to confirm.
7. Click **OK** to close the **Phone and Modem Options** screen.

Configuring your PC's dial-up settings

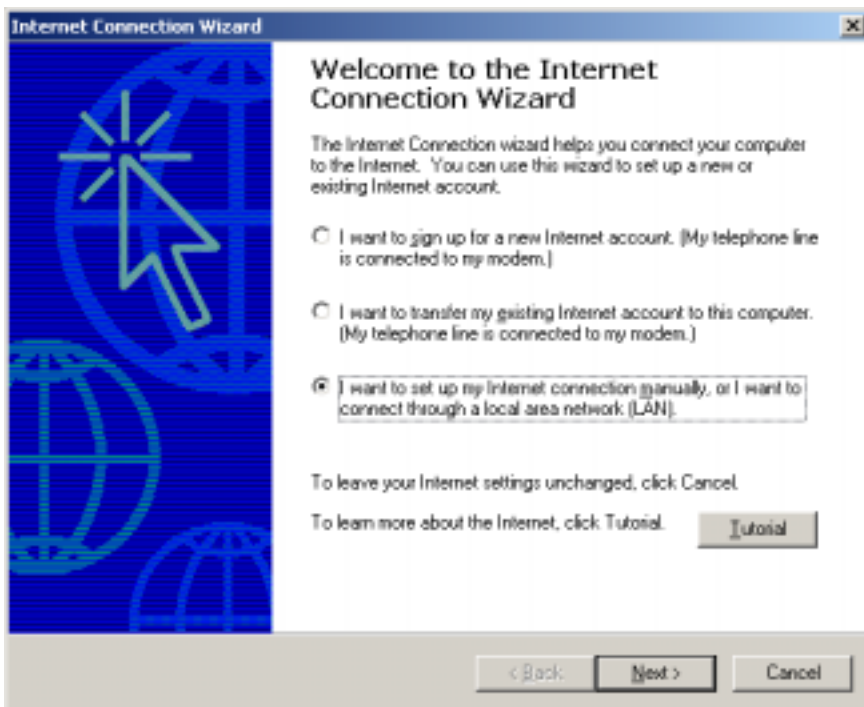
1. Open **Control Panel**, double-click the **Network and Dial-up Connections** icon and then double-click **Make New Connection**.
2. The **Network Connection Wizard** screen appears. Click **Next**.



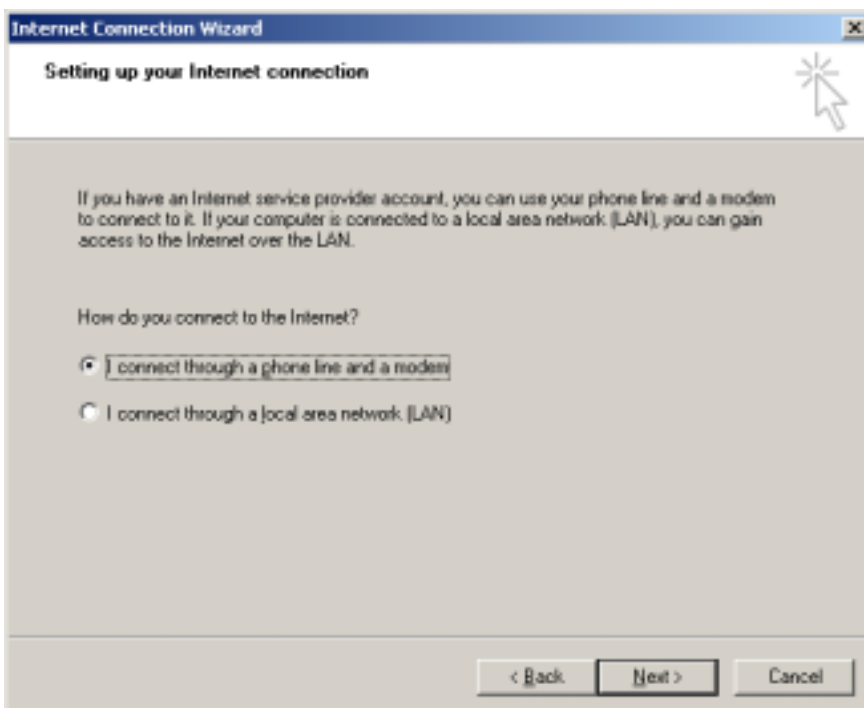
3. Click **Dial-up to the Internet** and then click **Next**.



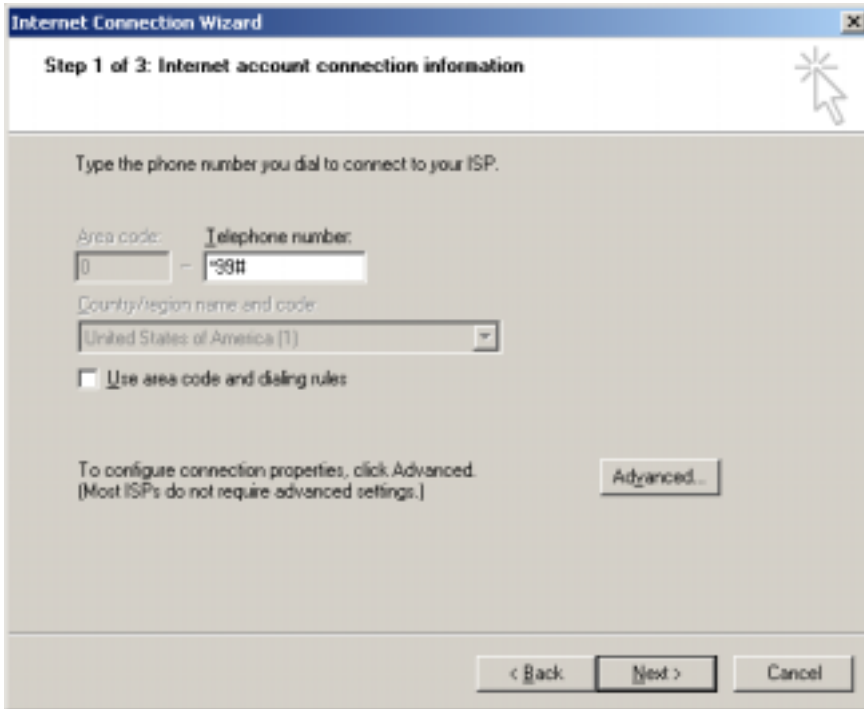
4. The **Internet Connection Wizard** screen appears. Click **I want to set up my Internet connection manually, or I want to connect through a local area network [LAN]**, and then click **Next**.



5. The screen shown below appears. Click **I connect through a phone line and a modem** and then click **Next**.



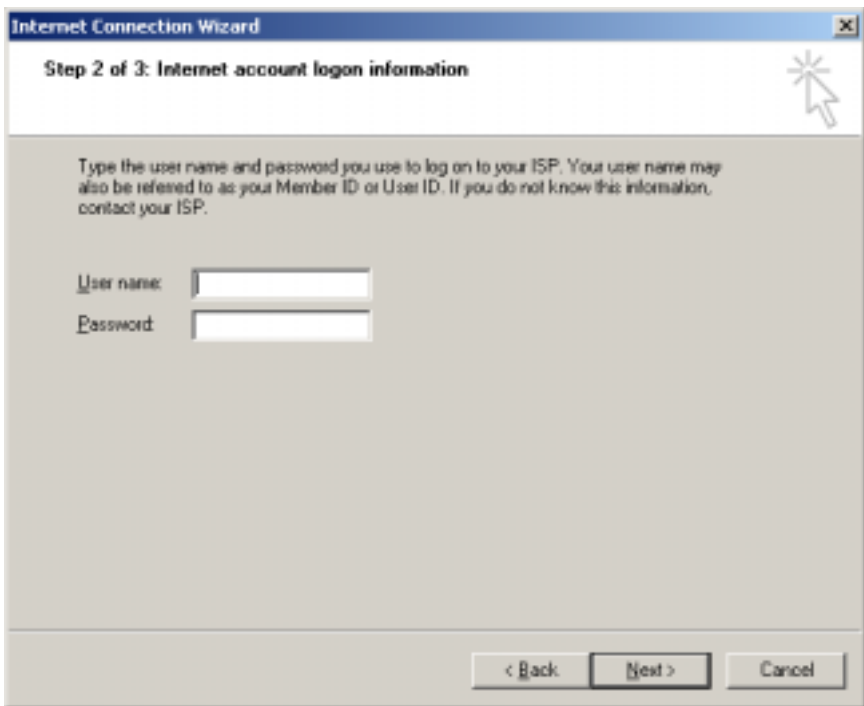
6. The screen shown below appears. Click to clear **Use area code and dialing rules** check box. In the **Telephone number:** field, enter the ISP telephone number and then click **Next**.
Note : The appropriate ISP telephone numbers for the UK and France are shown in Table 1 at the end of this document.



The screenshot shows the 'Internet Connection Wizard' window, titled 'Step 1 of 3: Internet account connection information'. The window contains the following elements:

- A title bar with the text 'Internet Connection Wizard' and a close button (X).
- A subtitle 'Step 1 of 3: Internet account connection information'.
- A mouse cursor icon in the top right corner.
- Instructional text: 'Type the phone number you dial to connect to your ISP.'
- Two input fields: 'Area code:' with the value '0' and 'Telephone number:' with the value '-99#'. There is a hyphen between the two fields.
- A dropdown menu for 'Country/region name and code' with 'United States of America (1)' selected.
- An unchecked checkbox labeled 'Use area code and dialing rules'.
- Text: 'To configure connection properties, click Advanced. (Most ISPs do not require advanced settings.)' and an 'Advanced...' button.
- Navigation buttons at the bottom: '< Back', 'Next >', and 'Cancel'.

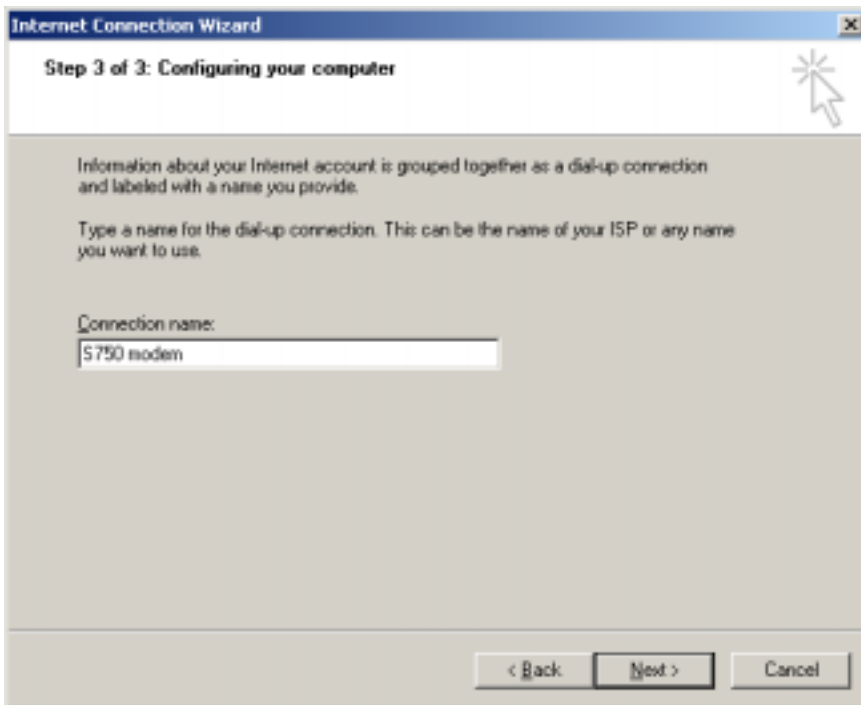
7. The screen shown below appears. In the **User name:** and **Password** fields, enter the appropriate information shown in Table 1, and then click **Next**.



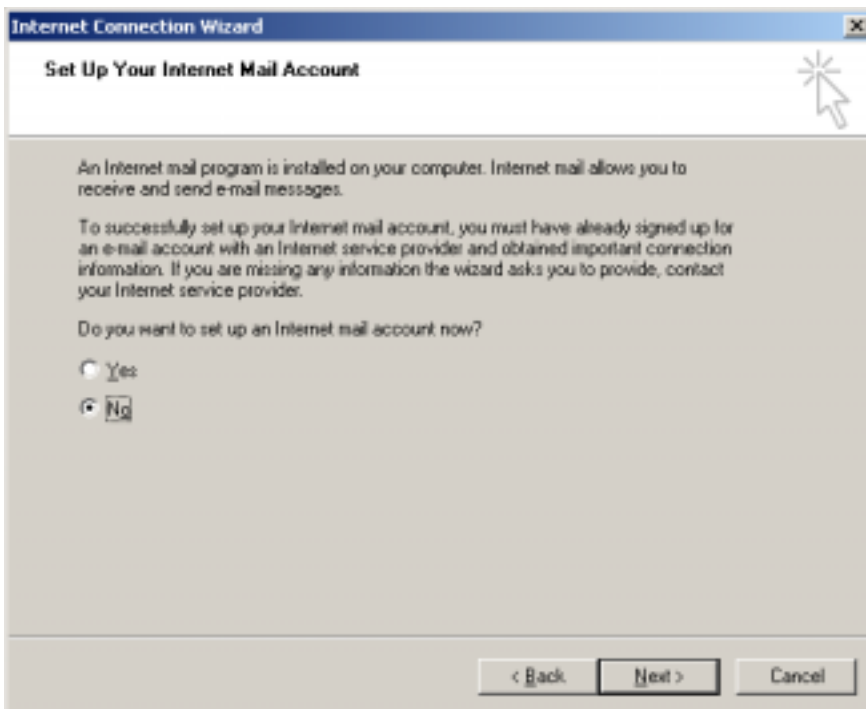
The screenshot shows the 'Internet Connection Wizard' window, titled 'Step 2 of 3: Internet account logon information'. The window contains the following elements:

- A title bar with the text 'Internet Connection Wizard' and a close button (X).
- A subtitle 'Step 2 of 3: Internet account logon information'.
- A mouse cursor icon in the top right corner.
- Instructional text: 'Type the user name and password you use to log on to your ISP. Your user name may also be referred to as your Member ID or User ID. If you do not know this information, contact your ISP.'
- Two input fields: 'User name:' and 'Password:'.
- Navigation buttons at the bottom: '< Back', 'Next >', and 'Cancel'.

8. The screen shown below appears. In the **Connection name** field, enter the desired connection name (anything is OK, for example, “S750 modem”), and then click **Next**.

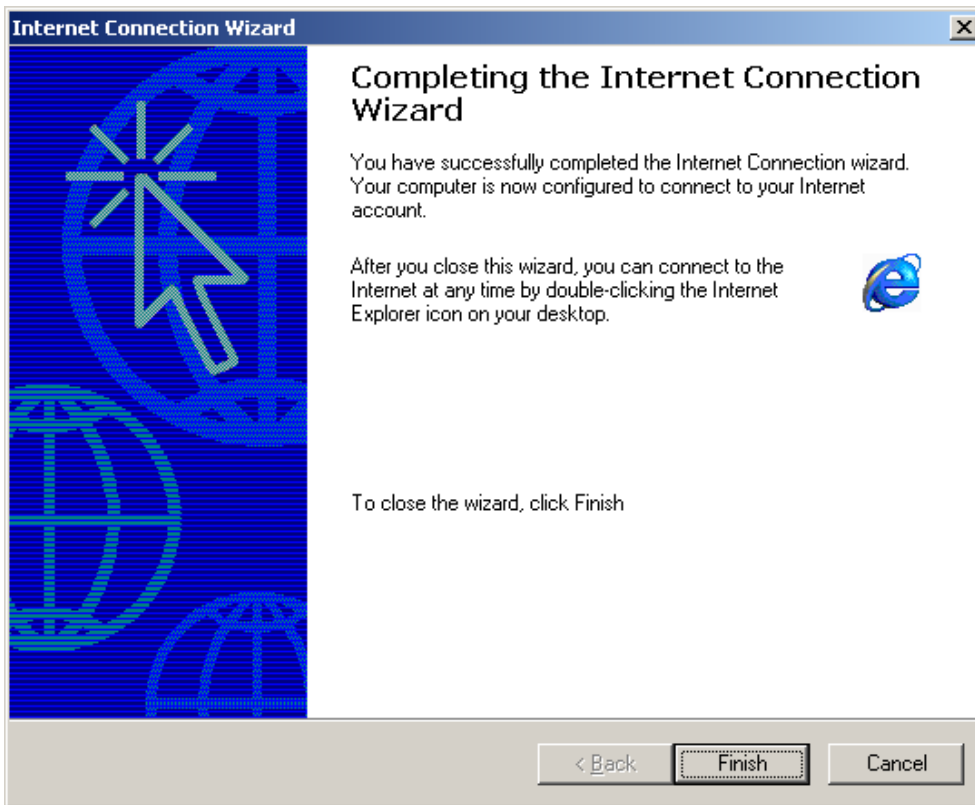


9. The screen shown below appears. Make sure **No** is selected and then click **Next**.



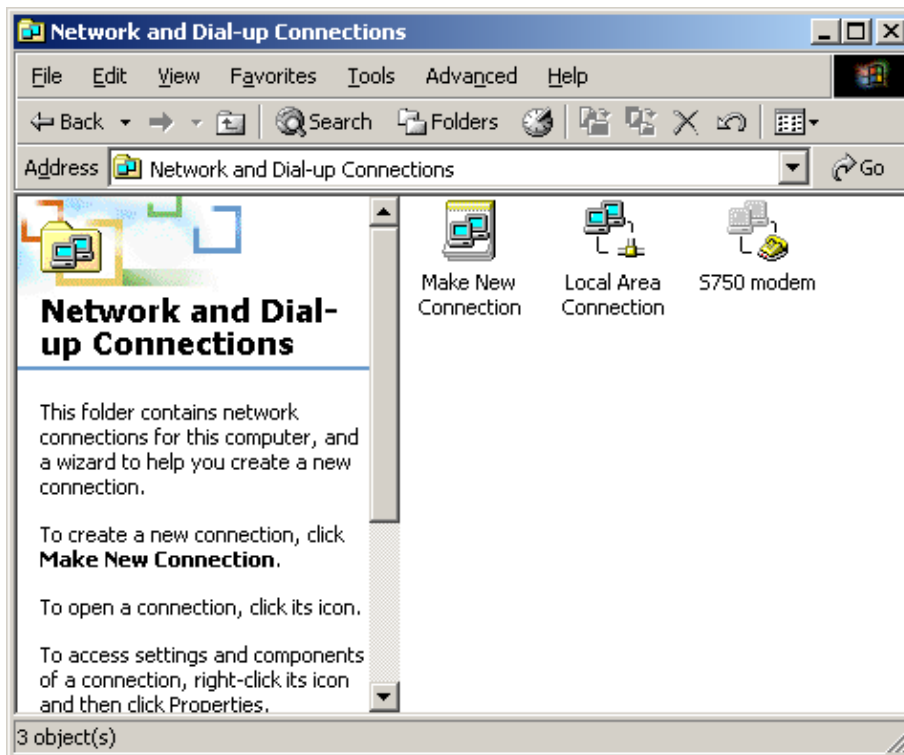
Note : You may be required to setup an e-mail account for the Internet at this point if it is necessary.

10. The screen shown below appears. Click **Finish** to confirm your settings.







Connecting to the Internet

1. Open **Control Panel**, double-click **Network and Dial-up Connections** and then double-click the icon with the name you gave for the modem in step 8 of “Configuring your PC’s dial-up settings”.



2. In the **User name:** and **Password:** fields, enter the information provided by Orange (indicated in Table 1 for the UK and France only, please enter the same username and password that you have already previously entered in the setup procedure), your operator, or ISP and then click **Dial** to connect to the Internet.

Table 1: Reference settings

Network Name	Orange France	Orange UK	Orange France
Network Settings	UMTS (Packet)  GPRS (Packet) 	UMTS (Packet)  GPRS (Packet) 	GSM (Circuit Switching)
AT Command	at+cgdcont=1,“IP”, “orange”	at+cgdcont=1,“IP”, “orangeinternet”	AT+CBST=71,0,1 or AT+CBST=7,0,0
ISP Telephone Number	*99#	*99#	+33 674 501 100 (0033 674 501 100)
User Name	Orange	Blank (Do not enter any words)	Orange
Password	Orange	Blank (Do not enter any words)	Orange