

Using the S750 as a modem

This manual explains how to configure your S750 as a modem for use with your PC.

Configurations for USB modem described below are true of Bluetooth modem.

Note: Depending on your operating system, some of the instructions and screens displayed on your PC may be different.

Before getting started:

Make sure you have already installed the S750 driver included on the CD-ROM that came with your S750 and obtained the Internet access information such as user names, passwords and so on from Orange (indicated in Table 1 for the UK and France only), your operator, or ISP (Internet Service Providers).

1. Turn on your PC and the S750.

Note: Enter your USIM/SIM Pin code when prompted.

2. Connect the USB cable to the S750 and the USB port on your PC.

Confirming/Changing the setting of your phone to 3G or 2G



at the top right of the screen indicates you are in 3G coverage.



at the top right of the screen indicates you are in 2G coverage.

1. Press [Menu].
2. Highlight the icon [Settings].
3. Select [Phone Settings] and press OK.
4. Select [Select Network] and press OK.
5. Select [Select Network] and press OK.
6. Press OK.
7. Select **UMTS/GSM Dual** to use the 3G (UMTS) network in the UK or France. Select **GSM Only** if you want to use the 2G (GSM/GPRS) network in France.

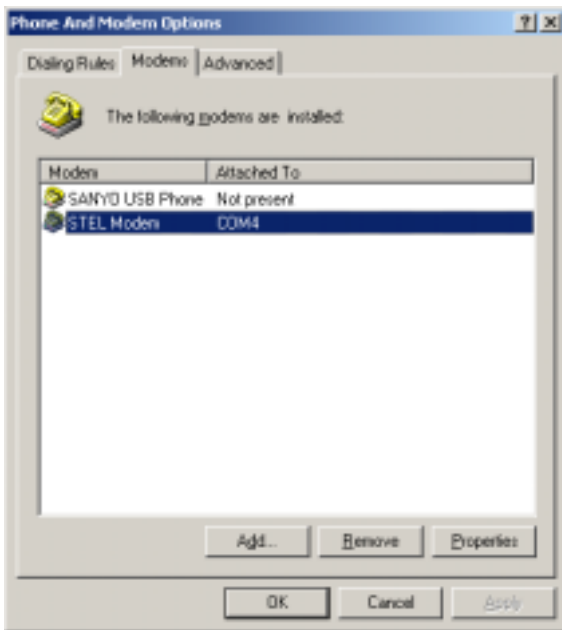
Note: The modem function cannot be used within the 2G(GSM) network in UK.

Configuring your S750 to function as a modem

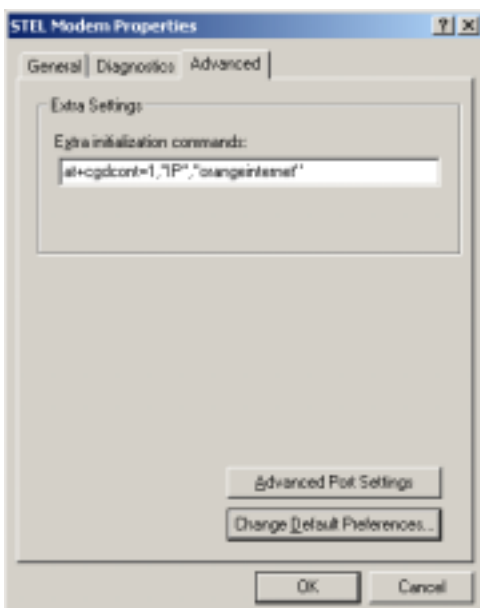
The explanation below is how to use USB cable in use for modem.

When you use Bluetooth, please refer to another manual which shows you how to set up Bluetooth.

1. On your PC, click **Start**, point to **Settings**, and then click **Control Panel**.
2. Double-click the **Phone and Modem Options** icon. If you are prompted to indicate your location/region and so on, type in the necessary information and click **OK**.
3. The **Phone and Modem Options** screen appears. Click the **Modems** tab and then click **STEL Modem**. Make sure that the COM port indicated in the **Attached To** list is the correct port on your PC for connecting to the S750. (In the case of Bluetooth connection, please choose Bluetooth Modem.)
4. Click **Properties**.



5. The **STEL Modem Properties** screen appears.
6. Click the **Advanced** tab and in **Extra initialization commands:**, type the AT command code.
Note: AT command codes are shown in Table 1 at the end of this document.



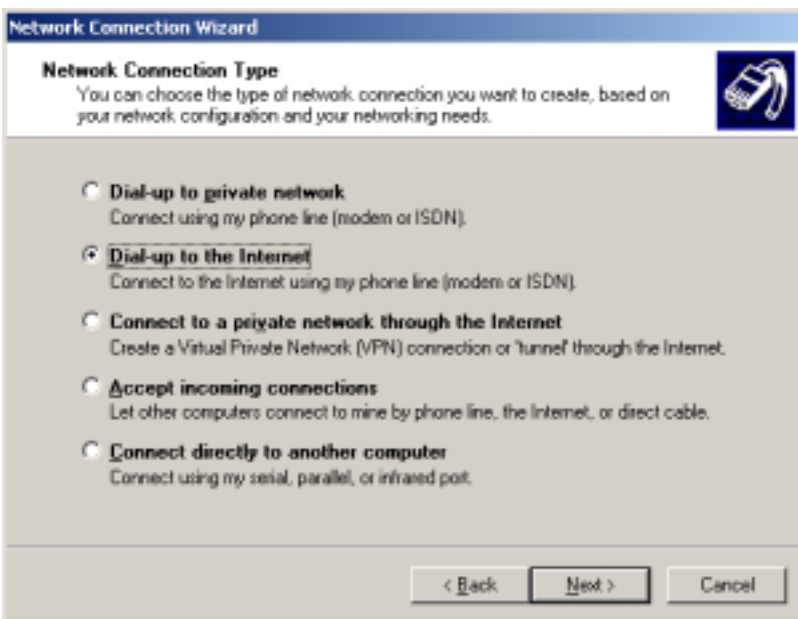
7. Click **OK** to confirm.
8. Click **OK** to close the **Phone and Modem Options** screen.

Configuring your PC's dial-up settings

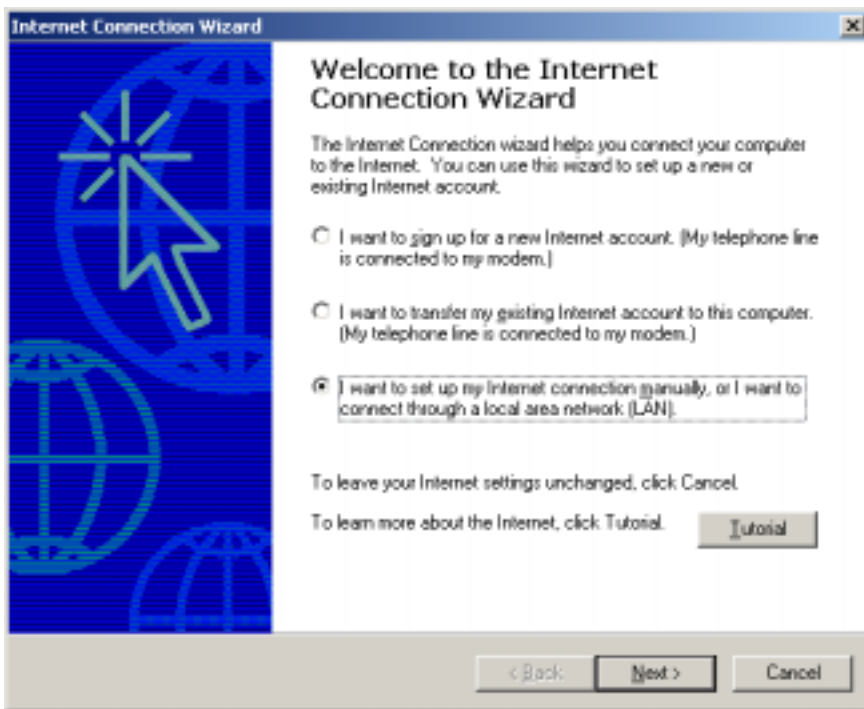
1. Open **Control Panel**, double-click the **Network and Dial-up Connections** icon and then double-click **Make New Connection**.
2. The **Network Connection Wizard** screen appears. Click **Next**.



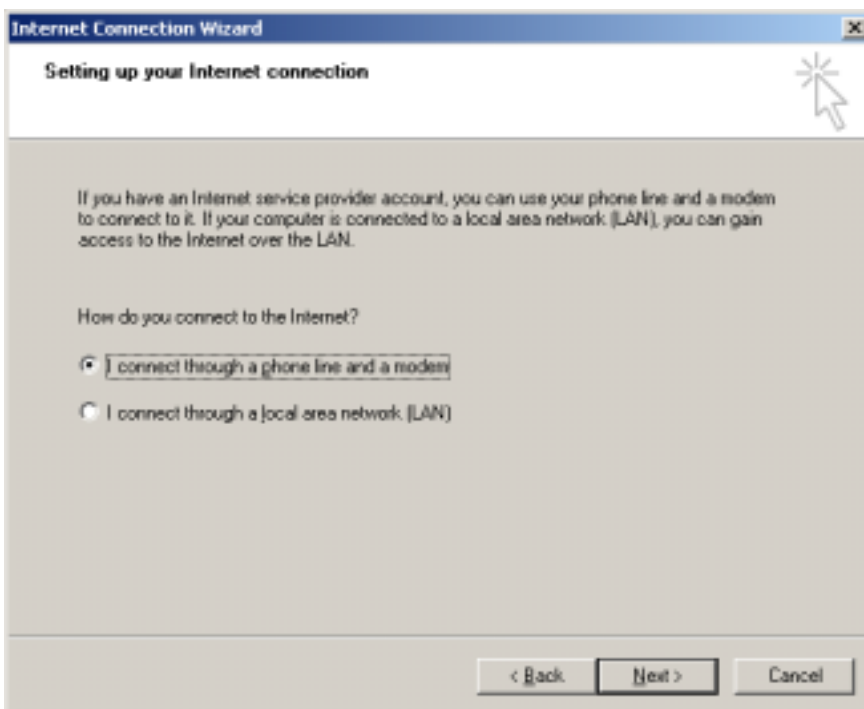
3. Click **Dial-up to the Internet** and then click **Next**.



4. The **Internet Connection Wizard** screen appears. Click **I want to set up my Internet connection manually, or I want to connect through a local area network [LAN]**, and then click **Next**.

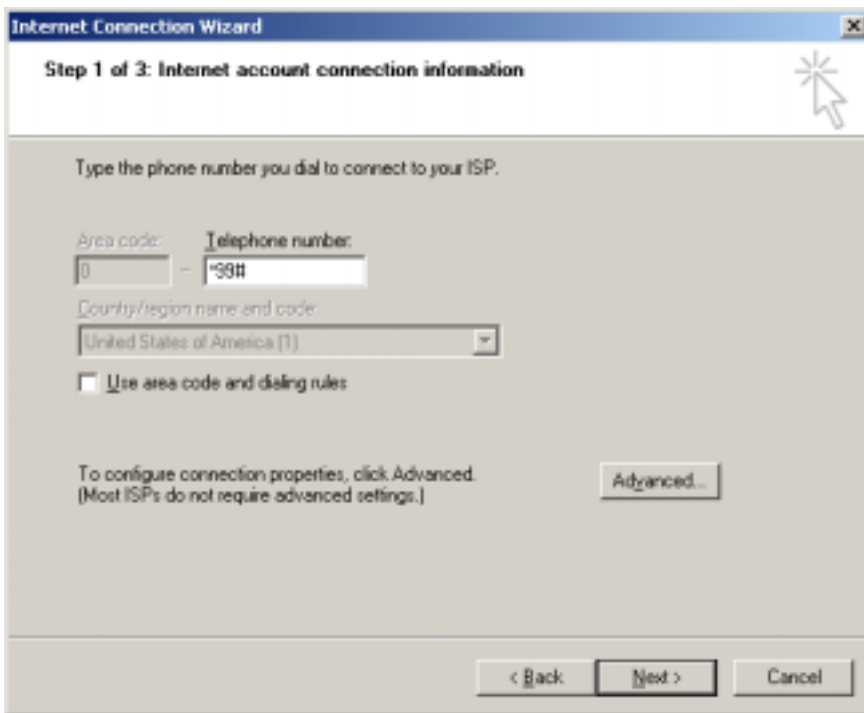


5. The screen shown below appears. Click **I connect through a phone line and a modem** and then click **Next**.



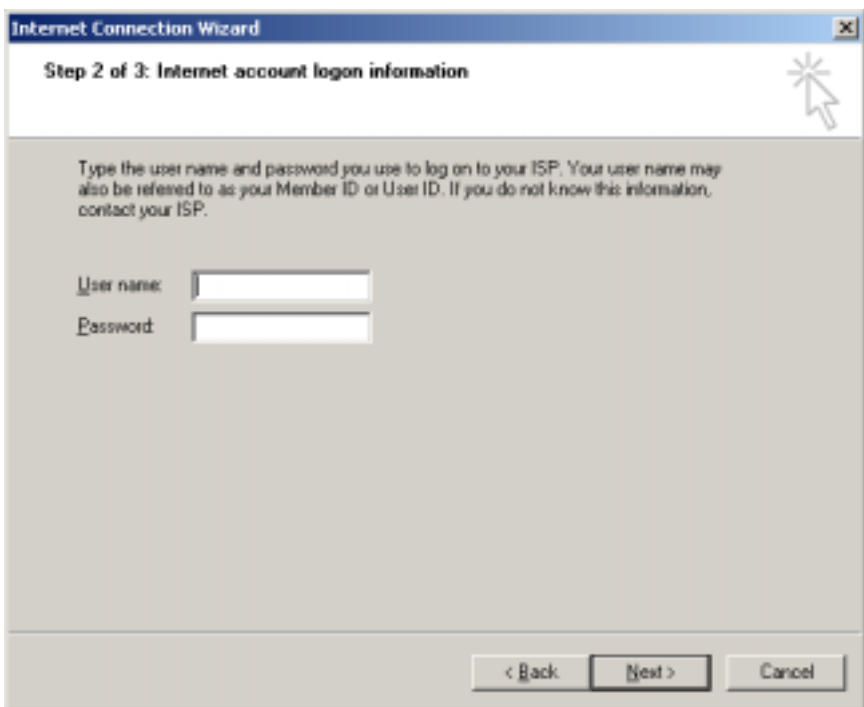
6. The screen shown below appears. Click to clear **Use area code and dialing rules** check box. In **Telephone number:**, type the telephone number and then click **Next**.

Note: ISP telephone numbers are shown in Table 1 at the end of this document.



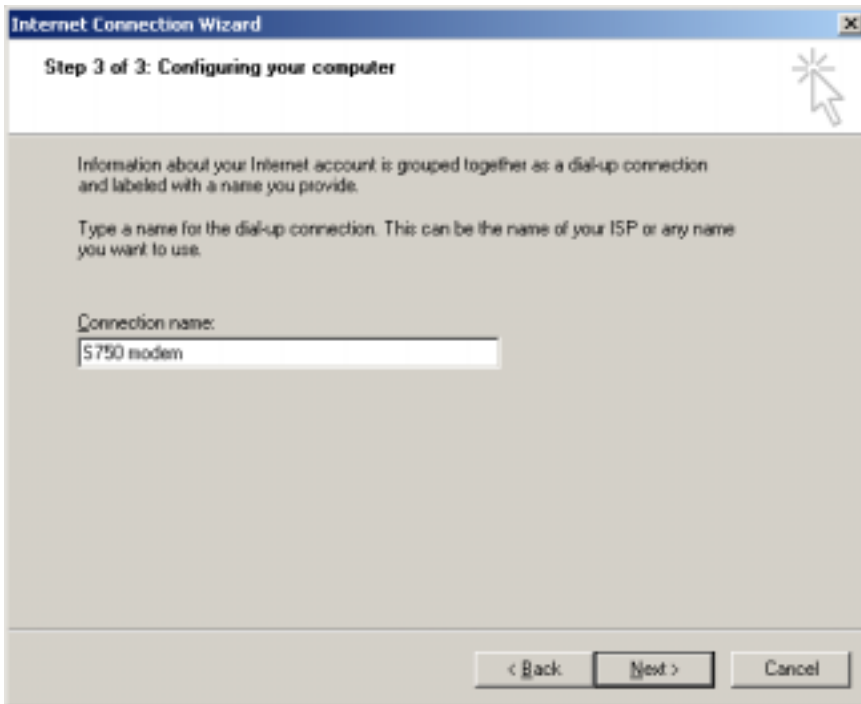
The screenshot shows the 'Internet Connection Wizard' window, Step 1 of 3: Internet account connection information. The window title is 'Internet Connection Wizard'. The main heading is 'Step 1 of 3: Internet account connection information'. Below the heading, there is a text prompt: 'Type the phone number you dial to connect to your ISP.' There are two input fields: 'Area code:' with the value '0' and 'Telephone number:' with the value '*99#'. Below these is a dropdown menu for 'Country/region name and code' with the selected value 'United States of America (1)'. There is a checkbox labeled 'Use area code and dialing rules' which is currently unchecked. At the bottom left, there is a note: 'To configure connection properties, click Advanced. (Most ISPs do not require advanced settings.)' and an 'Advanced...' button. At the bottom right, there are three buttons: '< Back', 'Next >', and 'Cancel'.

7. The screen shown below appears. In **User name:** and **Password:**, type the information shown in Table 1, and then click **Next**.

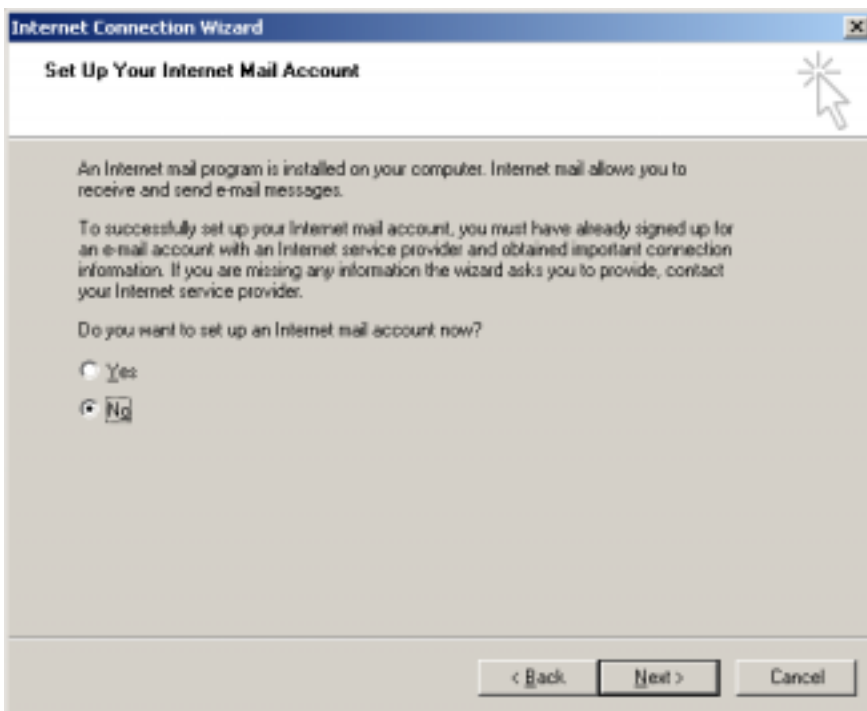


The screenshot shows the 'Internet Connection Wizard' window, Step 2 of 3: Internet account logon information. The window title is 'Internet Connection Wizard'. The main heading is 'Step 2 of 3: Internet account logon information'. Below the heading, there is a text prompt: 'Type the user name and password you use to log on to your ISP. Your user name may also be referred to as your Member ID or User ID. If you do not know this information, contact your ISP.' There are two input fields: 'User name:' and 'Password:'. At the bottom right, there are three buttons: '< Back', 'Next >', and 'Cancel'.

8. The screen shown below appears. In **Connection name**, type the desired connection name (anything is OK, for example, “S750 modem”), and then click **Next**.

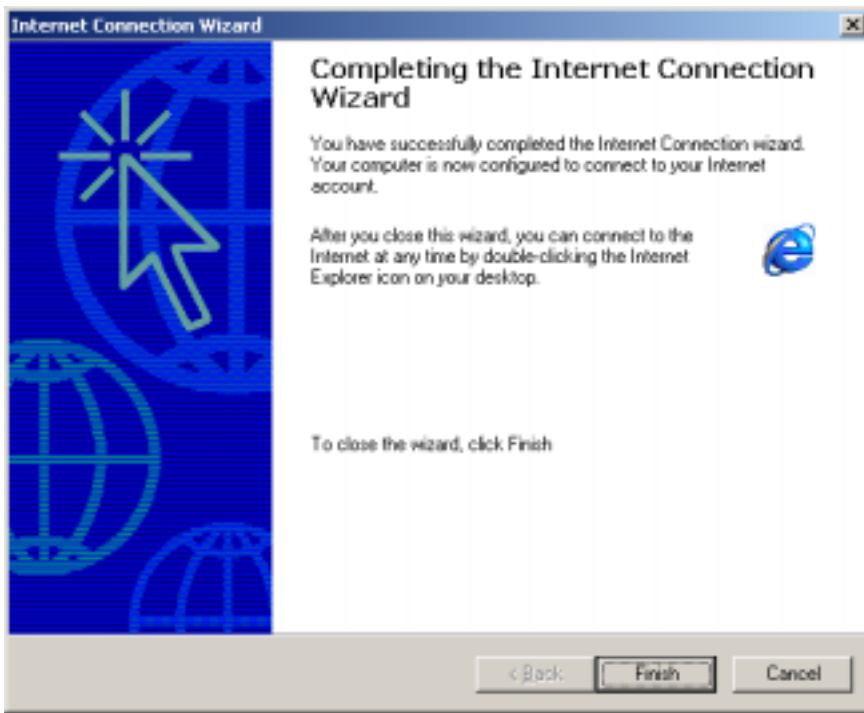


9. The screen shown below appears. Make sure **No** is selected and then click **Next**.



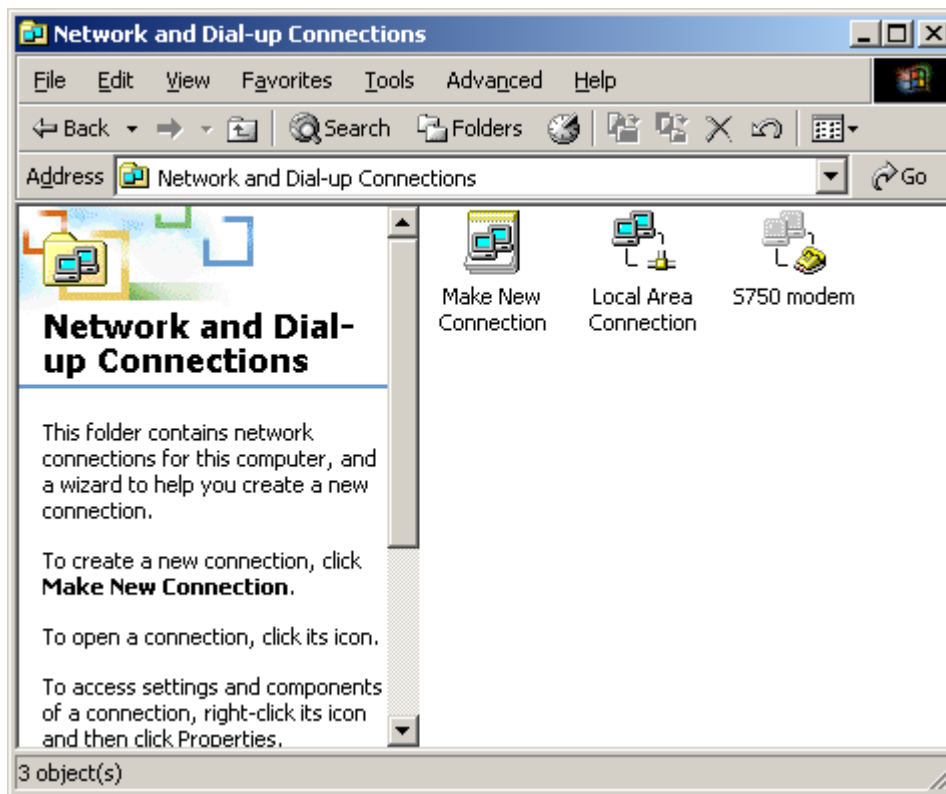
Note: You may be required to setup an e-mail account for the Internet at this point if it is necessary.

10. The screen shown below appears. Click **Finish** to confirm your settings.



Connecting to the Internet

1. Open **Control Panel**, double-click **Network and Dial-up Connections** and then double-click the icon with the name you gave for the S750 modem in step 8 of “Configuring your PC’s dial-up settings”.



2. In **User name:** and **Password:**, type the information provided by Orange (indicated in Table 1 for the UK and France only, please type the same username and password that you have already typed during this procedure), your operator, or ISP and then click **Dial** to connect to the Internet.

Table 1: Reference settings

| | | | |
|-------------------------|---------------------------------------------|-----------------------------------------|------------------------------------------|
| Network name | Orange France UMTS (Packet)/GPRS(Packet) | Orange UK UMTS (Packet)/GPRS(Packet) | Orange France GSM (Circuit Switching) |
| AT command | at+cgdcont=1,“IP”, “orange” | at+cgdcont=1,“IP”, “orangeinternet” | AT+CBST=71,0,1 or AT+CBST=7,0,0 |
| ISP Telephone number | *99# | *99# | +33 674 501 100 (0033 674 501 100) |
| User name | Orange | Blank (Do not enter any words) | Orange |
| Password | Orange | Blank (Do not enter any words) | Orange |