

## Bluetooth Quick Setup Guide

1. Accessing Bluetooth functions..... P2
2. Send vCard data via Bluetooth..... P3
3. Dial-up via Bluetooth..... P5
4. Troubleshooting dial-up problems...P6
5. Bluetooth synchronization.....P7

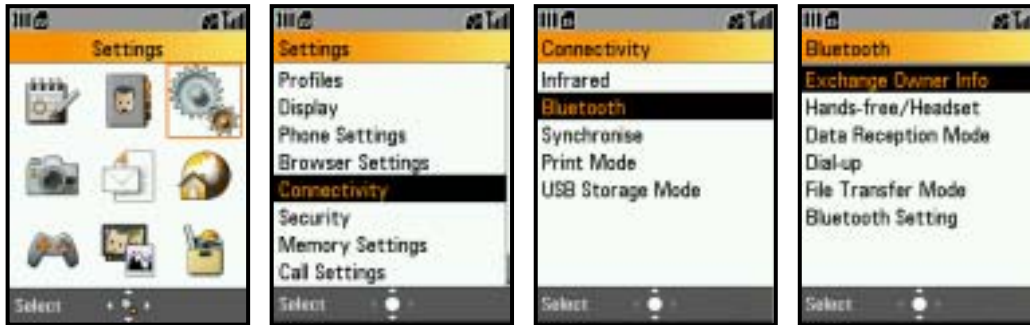
### Before getting started

- Make sure your PC is Bluetooth compatible.
- When you use S750 as a modem via Bluetooth, check whether your PC is Bluetooth compatible and supports dial-up via Bluetooth.
- Download and read the Dial-up via Bluetooth Guide. Available from 'Service' → 'Downloads' section at <http://www.sanyo-mobile.com>.
- Download and read the S750 Synchronisation Setup Guide. Available from 'Service' → 'Downloads' section at <http://www.sanyo-mobile.com>.

## 1. Accessing Bluetooth functions

From your S750 standby menu, go to

Menu → Settings → Connectivity → Bluetooth



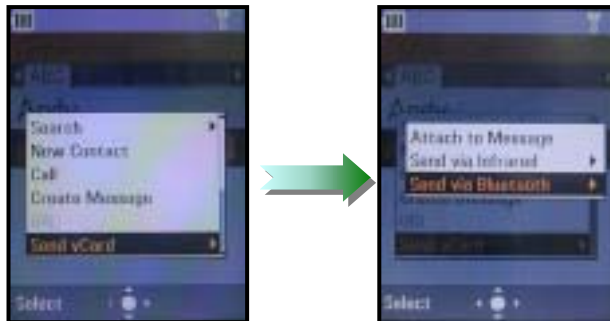
Menu item	Explanation
Exchange Owner Info	To exchange vCard information
Hands-free/ Headset	To use an earphone & mic To use an earphone & mic with controller
Data Reception Mode	To receive data from another Bluetooth enabled device * Only v-object data (vCard, vCalendar, vNote, )
Dial-up	To use S750 as modem
File Transfer Mode	To transfer data via FTP between the S750 and PC
Bluetooth Setting	To check or perform Bluetooth settings

## 2. Send vCard via Bluetooth

You can send vCard data to another mobile phone. (Must be Bluetooth compatible)

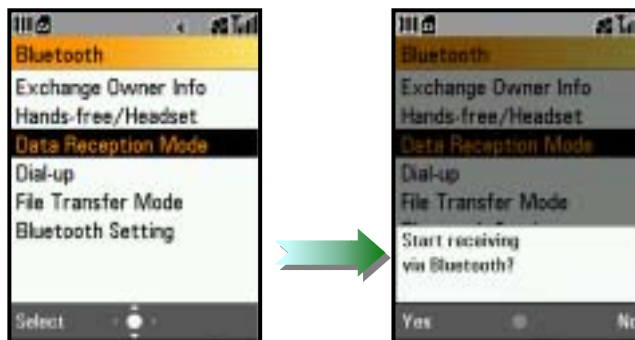
1. From the sender's phone

Menu → Address book → Contacts list → Options → Send vCard → Send via Bluetooth

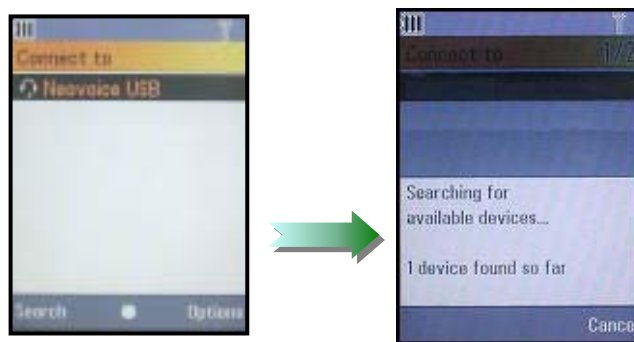


2. From the receiver's phone

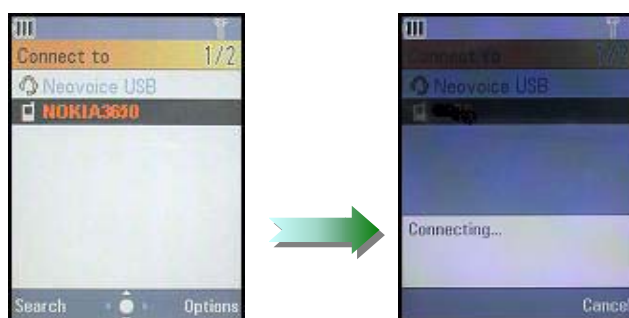
Menu → Settings → Connectivity → Bluetooth → Data Reception Mode → Yes



3. The sender needs to press [Search] if the receiver is not on the connection list.



4. Select a device from the displayed list and press OK.



\*) After a new device search, you can add it to the connection list by pressing [Options] and selecting “Add to Connection List”. You can choose the device from the list without having to search again next time.

5. Enter the Bluetooth Password and the data is transmitted.



\*) **Bluetooth password** (Also referred to as ‘Passkey’ or ‘PIN’.) is used for authorizing a connection between 2 Bluetooth devices. Please enter the same number (up to 8 digits) for each device. **You can choose any numeric password at the time of each connection. The password must be re-entered for authentication each time you connect. All you have to remember is that the password must be identical each time.**

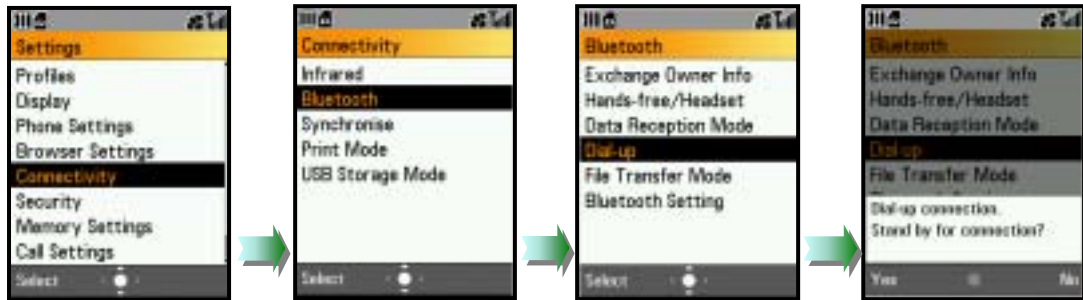
The S750 waits for 30 seconds for the return password from the device you are connecting with. The device your connecting with has it’s own timeout period which may be shorter than the S750’s, therefore you will need to enter the password before it times out.

If you don’t want to bother with entering the password, from the Bluetooth Setting display you can switch it off by selecting “Bluetooth Password → OFF”.

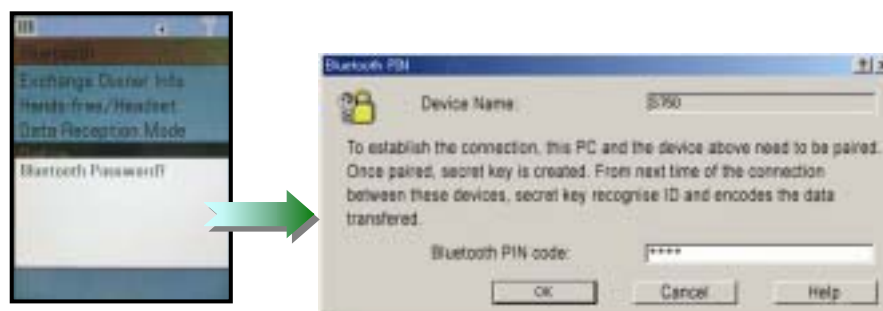
### 3. Dial-up via Bluetooth


Your PC must be Bluetooth compatible and support dial-up via Bluetooth.

1. From your S750 standby menu, go to  
Menu → Settings → Connectivity → Bluetooth → Dial-up → Yes



2. Input the Password on both the S750 and PC



If the connection between the S750 and the PC is completed correctly, the  icon will appear in the top of the S750's display.

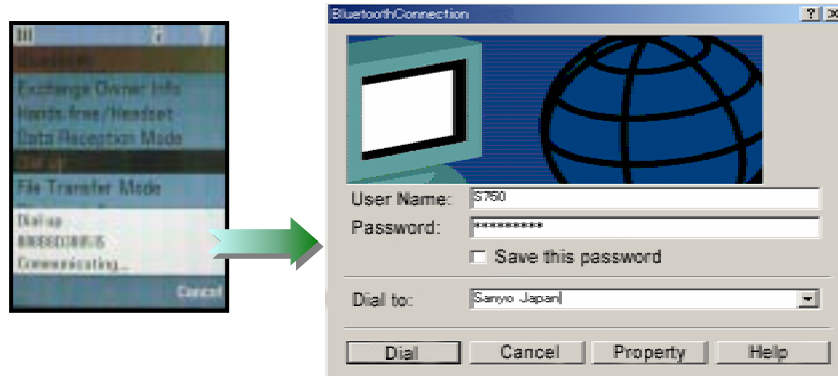
- \*) The **Bluetooth password** (Also referred to as 'Passkey' or 'PIN'.) is used for authorizing a connection between 2 Bluetooth devices. Please enter the same number (up to 8 digits) for each device. **You can choose any numeric password at the time of each connection. The password must be re-entered for authentication each time you connect. All you have to remember is that the password must be identical each time.**

The S750 waits for 30 seconds for the return password from the device you are connecting with. The device your connecting with has it's own timeout period which may be shorter than the S750's, therefore you will need to enter the password before it times out.

If you don't want to bother with entering the password, from the Bluetooth Setting display you can switch it off by selecting "Bluetooth Password → OFF".


3. Connect to the Network via your PC after entering the information required for dial-up. (Refer


to the Dial-up via Bluetooth guide)



#### 4. Troubleshooting dial-up problems

If you cannot connect to the Orange network via Bluetooth, check the Bluetooth status icon on the S750.

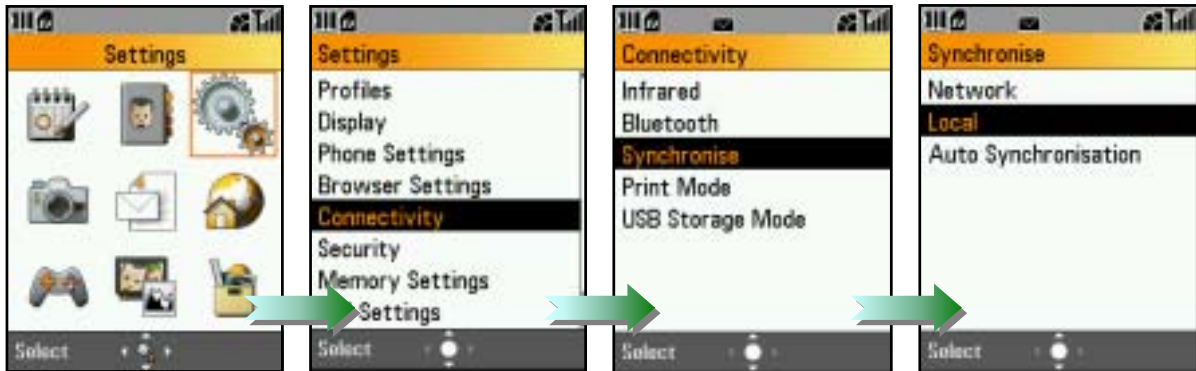
**Status1**  The problem may be the Orange network.

**Status2**  The problem may be the connection between the Bluetooth device and S750.

If you cannot resolve the problems on your own or by referring to the S750 user guide, contact an Orange service representative by dialing the customer service number indicated in your S750 user guide.

## 5. Bluetooth synchronisation (Preparing your S750 for the first time)

1. From the Standby display, go to  
Menu → Settings → Connectivity → Synchronise → Local



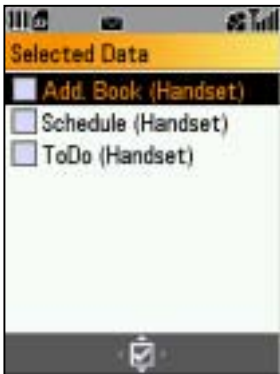
2. Select <No items>



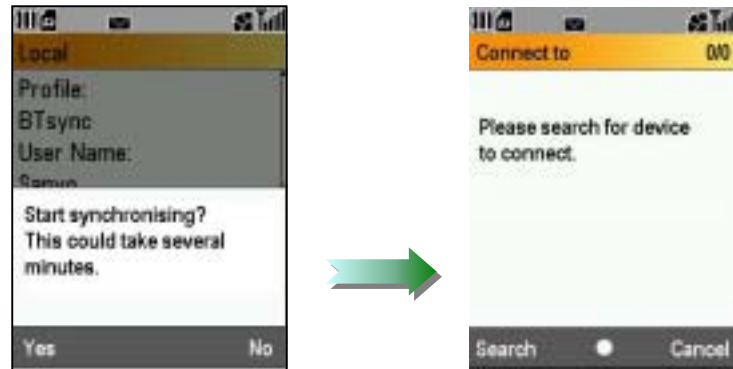
3. After the Local entry display appears, create the your synchronization profile according to the table in step 4 below.




4. Enter the required profile data according to the information below.

<i>Item</i>	<i>Action</i>	<i>Comments</i>
<b>Profile</b>	Enter the profile name	User's choice
<b>User name</b>	Enter user name	User's choice * If you have entered a "User name" in the security setting in your "Intellisync for Sanyo" software, enter the same name here.
<b>Password</b>	Enter your password * The code to change your password is <b>9999</b> by default.	User's choice * If you have entered a "Password" in the security settings in your "Intellisync for Sanyo" software, enter, the same name here.
<b>Communication Method</b>	Select Bluetooth	
<b>Method</b>	Select Method	1)To synchronise your mobile phone and PC data Choose the "Normal" mode. 2)To overwrite any existing data on the connected PC with data from your mobile phone. Choose the "Replace" mode.
<b>Selected Data</b>	Select any data	User's choice 
<b>Database (Address Book)</b>	./PhoneBook (default)	There is no need to modify the default settings. Only change this setting if absolutely required. (For advanced users)
<b>Database (Schedule)</b>	./Sch (default)	
<b>Database (ToDo)</b>	./ToDo (default)	

5. Select Start → Yes → Search



6. Next, go to your PC and open the “Intellisync for Sanyo” software.
7. Confirm the items ticked for synchronisation and perform the required settings (refer to the Synchronisation Setup Guide), then press OK to start synchronisation.
  - \* If you fail to synchronise, open the “Configure” menu in “Intellisync for Sanyo” and make sure the Bluetooth connection is selected as well as the appropriate COM port.
8. After you have started synchronisation, the  icon is displayed on your S750.